

**revv™**



**nuna®**

# Thank you!

You've just purchased a Nuna product, and you can be sure that your child is getting the best there is. Our products are expertly engineered for safety, with luxury fabrics and sophisticated style. Whatever made you fall in love with Nuna, rest assured your adventures with your little one will be easier from now on, freeing you to enjoy more happy family moments together.

## Easy Installation

Our products are designed to make your life easier, so installing this child restraint doesn't require outside assistance. While we encourage the use of Certified Child Passenger Safety Technicians to ensure you have installed the seat correctly, you can install the child restraint in your vehicle without these professionals by carefully reading and following these instructions.



**IMPORTANT!  
KEEP THESE  
INSTRUCTIONS FOR  
FUTURE REFERENCE:**  
*READ CAREFULLY*

**⚠ WARNING:** Read and understand **ALL** warning labels affixed to the child restraint and all written instructions. Failure to do so can result in serious injury or death. Store instructions in the slot on the back of the seat shell for future use.

## Contents

### Important Information

Product Information/Registration	4
Child Usage Requirements	6
Safety Warnings	8
Car Seat Use after a Crash	11
Vehicle Compatibility	12

### Child Restraint Overview

Parts List	18–21
Features Usage	22
Child Restraint Installation	42

### Rear Facing Installation

54

### Forward Facing Installation

56

### Securing Child

58

### Cleaning and Maintenance

62

### Softgoods Removal

Head Support	64
Seat Cover	66

## Product Information/Registration

Model Number: \_\_\_\_\_

Manufactured in (date): \_\_\_\_\_

### Product Registration

Please fill in the above information. The model number and the manufactured in date are located on a label on the bottom of your child restraint. Fill out the prepaid registration postcard attached to the seat cover and mail it today.

Child restraints could be recalled for safety reasons. You must register this restraint to be reached in a recall. Send your name, address, e-mail address if available and the restraint's model number and manufacturing date to:

Nuna Baby Essentials Inc.  
70 Thousand Oaks Blvd.  
Morgantown, PA 19543  
or call 1.855.NUNA.USA

For recall information, call the U.S. Government's  
Vehicle Safety Hotline at: 1.888.327.4236  
(TTY: 1.800.424.9153) or go to <http://www.NHTSA.gov>

## Warranty

We have purposely designed our high-quality products so that they can grow with both your child and your family. Because we stand by our product, our gear is covered by a custom warranty per product, starting from the day it was purchased. Please have the proof of purchase, model number and manufactured in date available when you contact us.

For warranty information please visit:  
[www.nunababy.com/usa/warranty](http://www.nunababy.com/usa/warranty)

## Contact

For replacement parts, service, or additional warranty questions, please contact our customer service department.

**In the USA:**  
[infousa@nunababy.com](mailto:infousa@nunababy.com)  
[www.nunababy.com](http://www.nunababy.com)  
1.855.NUNA.USA

# Child Usage Requirements

To use this child restraint, your child must meet **BOTH** the weight and height requirements below:

**Weight:** 5–40 lb (2.3–18 kg)

**Height:** 43 in. (1100 mm) or less

The infant insert (p.26) is for use with infants who weigh between 5–11 lb (2.3–5 kg).

**DO NOT** use the insert for a child who weighs more than 11 lb.

## Which mode is best for my child?

Consult the chart on the next page to determine the proper mode based on your child's weight/height. Throughout these instructions and on the product labels, the two modes are identified by color as indicated on the next page.

### American Academy of Pediatrics Recommendation

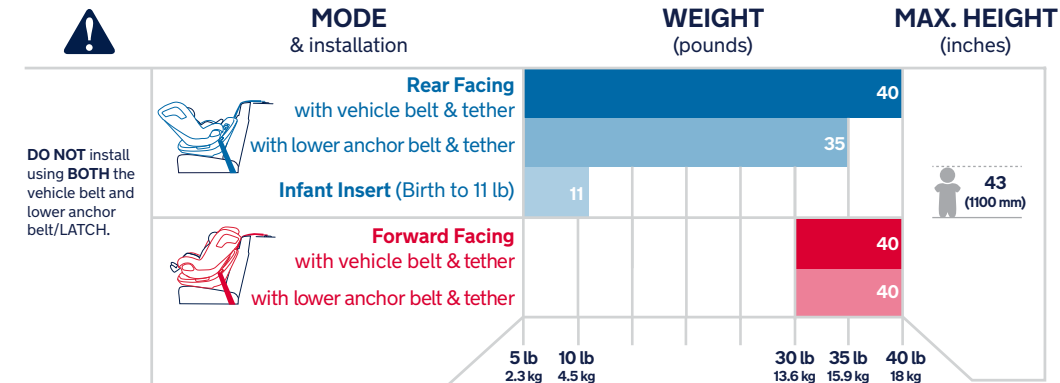
The AAP recommends children should ride **rear facing for as long as possible**, until they reach the maximum weight or height allowed by their seat.

For this seat, that maximum is 40 lb (18 kg) or less than 43 in. (1100 mm)

## Instruction Color Key

● Rear facing

● Forward facing



**⚠ WARNING**  
**DEATH OR SERIOUS INJURY CAN OCCUR,**

Use **ONLY** with children who weigh 5–40 lb (2.3–18 kg) and whose height is 43 in. (1100 mm) or less.

**DO NOT** use in any configuration not shown in the instructions. Please refer to vehicle owner's manual for recommended or suggested installation positions.

**NEVER** use the child restraint in a position between rear facing or forward facing. Always make sure the restraint is locked in the direction appropriate for your child.

**DO NOT** use the child restraint if it is more than 10 years old. Check the label or stamped “do not use after” date on the bottom of the child restraint.

**DO NOT** use another manufacturer's cover, padding, fabric, or other soft materials with this child restraint, as these constitute an integral part of the child restraint performance.

**DO NOT** modify your child restraint or use any accessories or parts supplied by other manufacturers unless they are approved by Nuna for use with this child restraint. Doing so may be unsafe and may void the warranty.

**DO NOT** use a cut, frayed or damaged vehicle seat belt. **NEVER** use the child restraint if it has frayed or cut harness straps, any damaged or missing parts, or has been in a damaging crash. To find out if damaged parts are replaceable, call 1-855-NUNA-USA.

**NEVER** use a car seat that has been involved in a moderate to severe crash. **See page 11** to learn the difference between a minor and moderate to severe crash.

This child restraint system meets all applicable requirements of Federal Motor Vehicle Safety Standard (FMVSS) 213. This restraint is certified for use only in passenger vehicles. This restraint is not certified for aircraft use, as aircraft belts will not accommodate proper installation of this restraint.

**DO NOT** allow anyone who has not read the instructions to install or use this child restraint. **NEVER** give this child restraint to another person without also giving them these instructions.

**NEVER** leave child unattended in this child restraint.

To avoid strangulation, do not allow children to play with vehicle or child restraint belts or straps. If possible, move unused belts out of reach.

Cover the child restraint when your vehicle is parked in sunlight. Parts of a child restraint can become very hot if left in the sun, and can burn a child's skin. Check for hot parts before putting your child in the child restraint.

**NEVER** leave child restraint unsecured in your vehicle even when it is unoccupied. In a crash, it could become a projectile and injure other vehicle occupants.

**NEVER** leave luggage or other objects unsecured in a vehicle, as they are liable to cause injuries in the event of a collision.

## Car Seat Use after a Crash

The National Highway Traffic Safety Administration (NHTSA) recommends that car seats be replaced following a moderate or severe crash. Car seats do not automatically need to be replaced following a minor crash.

A minor crash is one in which **ALL** of these apply:

- The vehicle was able to be driven away from the crash site.
- The vehicle door nearest to the car seat was not damaged.
- None of the passengers in the vehicle sustained any injuries in the crash.
- If the vehicle has air bags, none of the air bags deployed during the crash.
- There is no visible damage to the car seat.

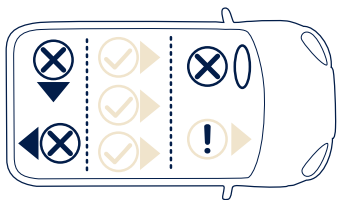
Any crash that does not meet all of the above criteria for a minor crash is considered a moderate to severe crash. **NEVER** use a car seat that has been involved in a moderate to severe crash.

*Information from [nhtsa.gov](http://nhtsa.gov)*

## Vehicle Compatibility

**⚠ WARNING:** You **MUST** read and understand **ALL** child restraint related instructions and warnings in your vehicle owner's manual to correctly and safely use this child restraint in your vehicle.

This child restraint can **ONLY** be installed on vehicle seats that face forward. **DO NOT** install in seats that face to the sides or rear of the vehicle.



**IMPORTANT:** According to accident statistics, children are safer when properly restrained in the rear seating positions than in the front seating positions.



**⚠ WARNING: SERIOUS INJURY OR DEATH MAY OCCUR. NEVER** install this child restraint rear facing in a vehicle seating position with a frontal air bag unless it is turned off. If your vehicle is equipped with front passenger air bags, check your vehicle owner's manual for child restraint installation instructions.

## Using LATCH

**LATCH** (Lower **A**nchors and **T**ether for **C**hildren) is a system for installing a child restraint in a vehicle without using the vehicle belts. This child restraint can be installed without vehicle belts by connecting the child restraint's lower anchor belt to the lower anchorages in your vehicle.

Refer to your vehicle owner's manual to determine if your vehicle is equipped with **LATCH**, and how to correctly use **LATCH** to install this child restraint in your vehicle.

The tether should **ALWAYS** be used in **BOTH** rear facing and forward facing installations, even when installing the child restraint with the vehicle belt.

## LATCH

This child restraint is designed to be used with lower **LATCH** anchors at the standard spacing of 11 inches (28 cm). **LATCH** lower vehicle anchor points are defined as 11 inches (28 cm) from the center of one **LATCH** anchor to the center of another **LATCH** anchor.

**⚠ WARNING: DO NOT USE** the lower anchors of the child restraint anchorage system (**LATCH** system) to attach this child restraint when restraining a child weighing more than 35 lb (15.9 kg) rear facing. The lower anchors can be used forward facing till the maximum weight limit of the seat (40 lb [18 kg]).



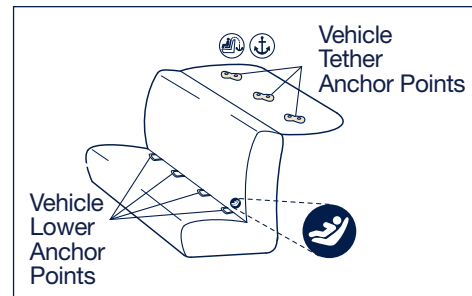
## LATCH Location

Common locations of **LATCH** in a vehicle are shown below (consult your vehicle owner's manual). Other locations of the tether are shown below.

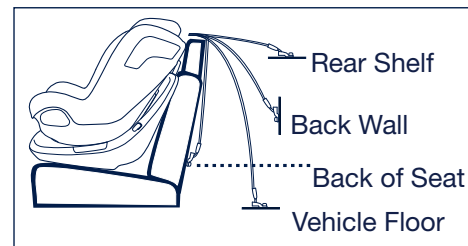
## Tether

The child restraint's tether strap should be used for **ALL** installations as it provides a more secure installation and is proven to be safer. In a crash, the tether limits a child's movement, protecting their head and neck and reducing the risk of injury.

Common LATCH locations  
(consult your vehicle manual):



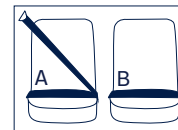
Other common tether locations  
(consult your vehicle manual):



## Using Vehicle Belts

Both vehicle belt types A and B (as pictured here) may be used for rear facing or forward facing installations.

Lap/Shoulder Belt (A)  
Lap Belt Only (B)



**!** Belts **MUST** be able to be locked. Refer to your vehicle owner's manual to determine if the belts in your vehicle lock by: 1) switching the seat belt's retractor by pulling the belt all the way out, or 2) a locking latch plate that locks the vehicle's seat belts so they will not move freely.

If the belt cannot be locked using one of these methods, contact Nuna Customer Service for a locking clip.

## Vehicle Belts that CANNOT Be Used

The following types of vehicle belts **MUST NOT** be used to install this child restraint. They will not provide a secure, safe installation. Refer to your vehicle owner's manual for which seating positions in your vehicle can be used to install this child restraint using vehicle belts or **LATCH**.

### 1 - Motorized Belts (Automatic)

These should not be used unless the shoulder belt can be removed, the lap belt is locked and use is allowed by the vehicle manufacturer.

### 2 - Dual Retractor Lap/Shoulder Belts

If allowed by the vehicle manufacturer, the lap belt only may be used to secure the child restraint if it can be locked in accordance with this manual and the vehicle's manual.

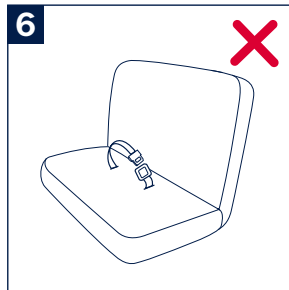
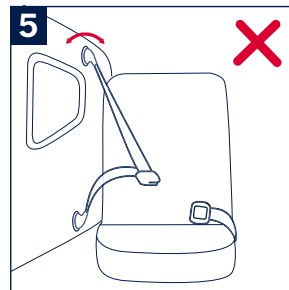
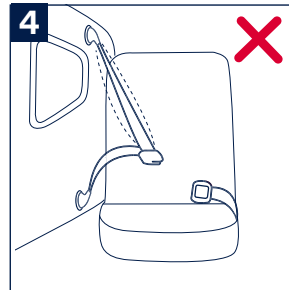
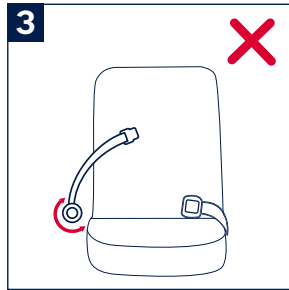
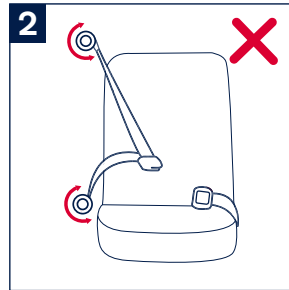
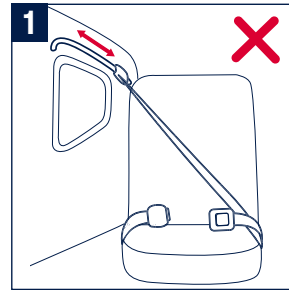
### 3 - Non-Locking (ELR) Lap Belts

This belt locks only in a crash or sudden stop and should only be used with a belt shortening clip. Contact your vehicle manufacturer if needed.

### 4 - Airbag/Inflatable Belts

### 5 - Door Mounted Belts

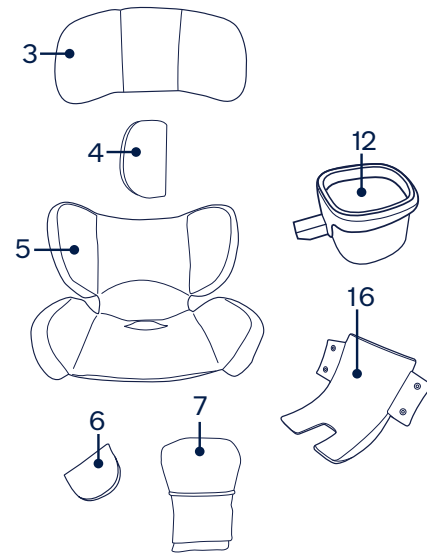
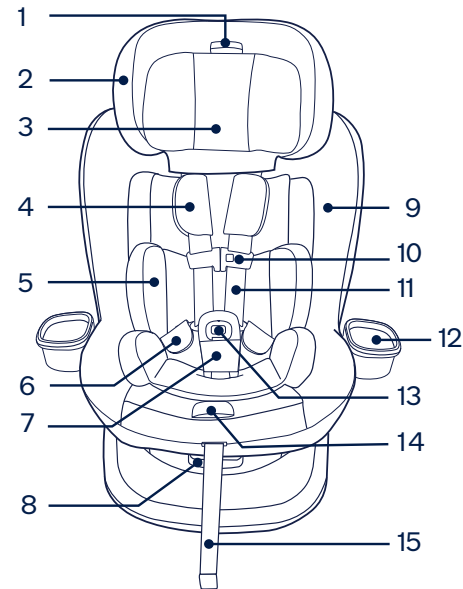
### 6 - Lap Belts forward of Seat Bight (where the seat bottom and back meet)



# Parts List

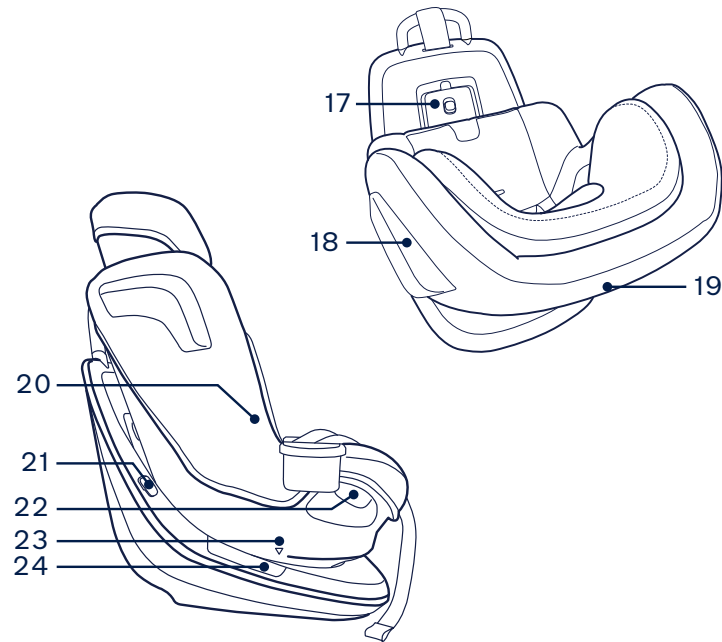
## Front View

- |                             |                              |
|-----------------------------|------------------------------|
| 1 Head Support Button       | 9 Seat Cover                 |
| 2 Head Support              | 10 Chest Clip                |
| 3 Head Insert               | 11 Harness Strap             |
| 4 Shoulder Harness Pad (x2) | 12 Cup Holder (x2)           |
| 5 Infant Insert (x2)        | 13 Adjustable Harness Buckle |
| 6 Hip Harness Pad (x2)      | 14 Harness Release Button    |
| 7 Crotch Pad                | 15 Harness Adjustment Strap  |
| 8 Recline Handle            | 16 Infant Insert Wedge       |



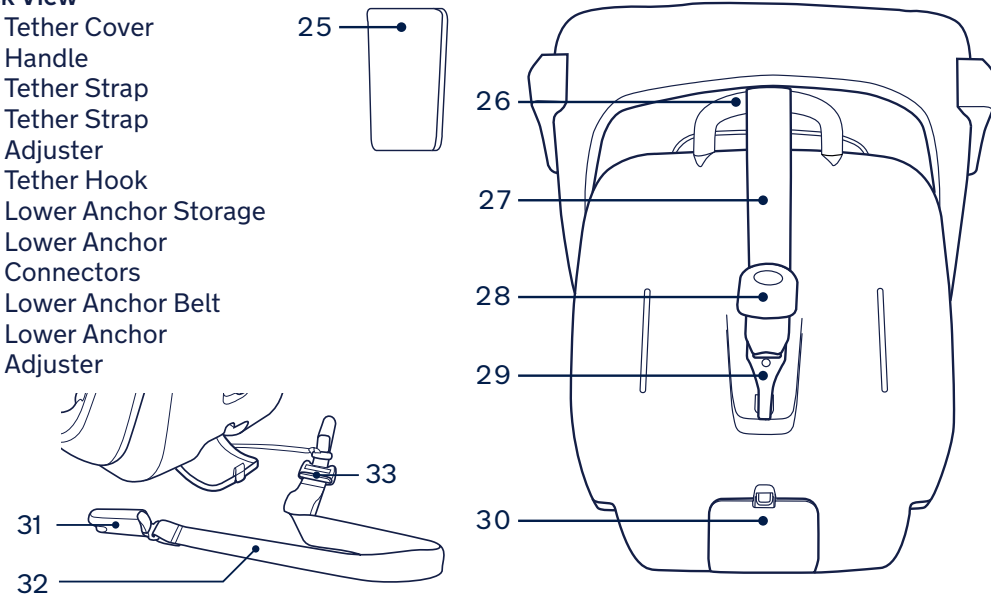
## Side View & Top View

- 17 True Tension™ Door
- 18 Side Impact Protection Pod
- 19 Instruction Manual Storage
- 20 Magnetic Buckle Tongue Holder
- 21 Belt Positioner
- 22 Rotate Position Button
- 23 Recline Position Indicator
- 24 Recline Position Window



## Back View

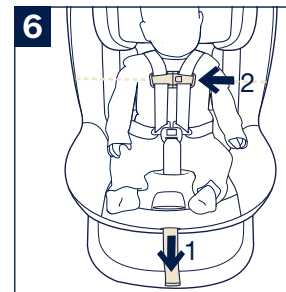
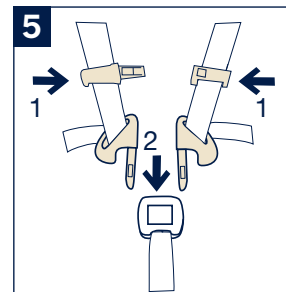
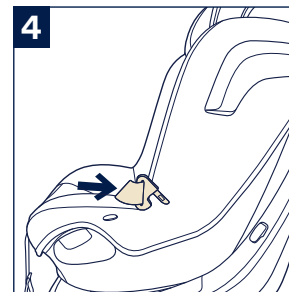
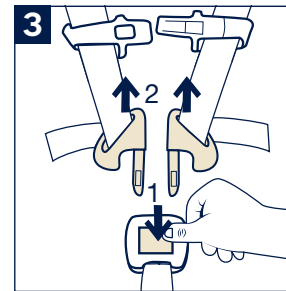
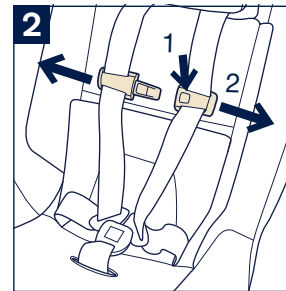
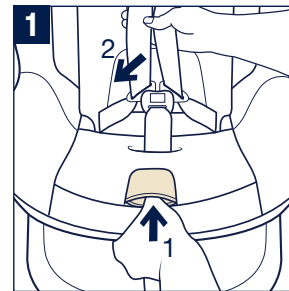
- 25 Tether Cover
- 26 Handle
- 27 Tether Strap
- 28 Tether Strap Adjuster
- 29 Tether Hook
- 30 Lower Anchor Storage
- 31 Lower Anchor Connectors
- 32 Lower Anchor Belt
- 33 Lower Anchor Adjuster



# Features Usage

## Harness

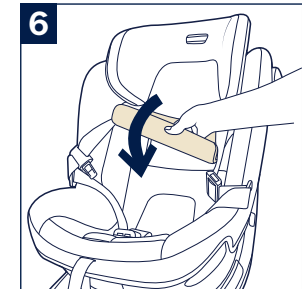
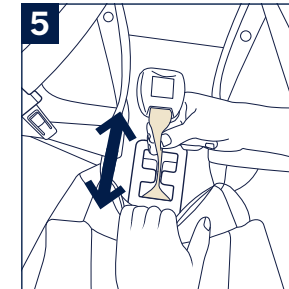
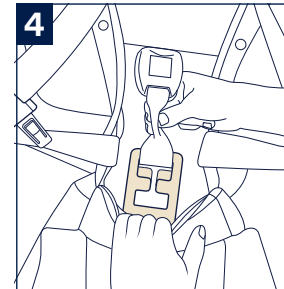
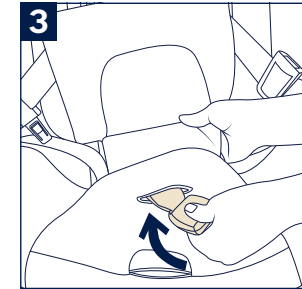
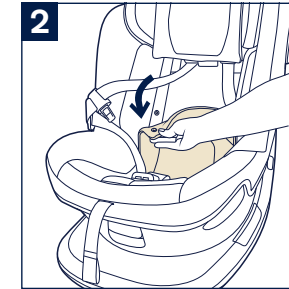
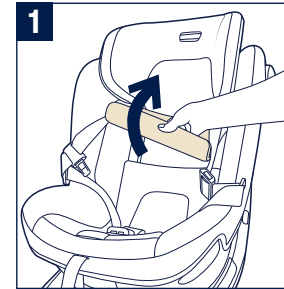
- 1 - To Loosen Harness**, press on harness release button **(1)** while pulling forward on the harness straps **(2)**.
- 2 - To Open Chest Clip**, press button on front of clip **(1)** and pull clip apart **(2)**.
- 3 - To Open Harness Buckle**, press red button on front of buckle **(1)** and pull out buckle tongues **(2)**.
- 4 - To Use Magnetic Buckle Tongue Holders**, loosen and unbuckle harness. Place the buckle tongues against the magnetic area on the side of the child restraint so that the tongues are held in place.
- 5 - To Fasten Chest Clip**, push chest clip halves together until they click. **(1)** Pull to check.  
**To Fasten Buckle**, insert buckle tongues firmly into buckle until they click. **(2)** Pull up on tongues to ensure they are locked.
- 6 - To Tighten Harness**, pull on harness adjustment strap. **(1)** Place chest clip at child's armpit level after tightening. **(2)**



## Adjustable Harness Buckle

- 1 - The harness buckle may be adjusted for improved comfort or fit of any child. Loosen harness, open the chest clip and harness buckle. Lift up on the lower section of the head support pad (1).
- 2 - Locate and undo 2 snap buttons on the seat back pad.
- 3 - Remove the harness buckle from the seat pad, and pull forward on the seat back pad.
- 4 - Locate the harness buckle adjustment slots in the seat shell and squeeze/pinch the sides of the harness buckle strap together. Drop the pinched strap slightly to allow it to pass between the positions.
- 5 - Slide the harness buckle strap forward or rearward (as shown) to best fit your child.  
Use the position that is closest to (but not under) your child.
- 6 - Insert the harness buckle back into the correct seat pad opening. Reattach both seat back pad snap buttons, and pull down on the lower section of the head support pad.

The infant insert (p.26) is for use with infants who weigh between 5–11 lb (2.3–5 kg). **DO NOT** use the insert for a child who weighs more than 11 lb.



## Head Insert

- 1 - The head insert may be used or removed for improved comfort or fit of any child. To use, attach the snaps on the head insert to the snaps on the head support.
- 2 - When the head insert is not in use, tuck the snaps on the head support behind the head support fabric.

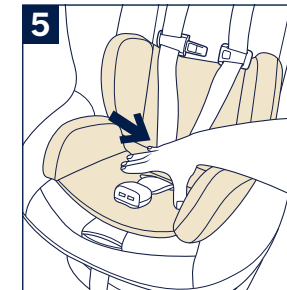
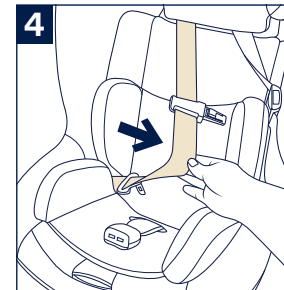
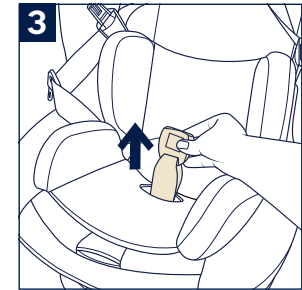
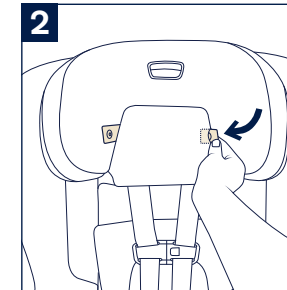
## Infant Insert & Insert Wedge

The insert **MUST** be removed once the child reaches 11 lb. The insert can improve the harness fit and recline angle for smaller infants.

When rear facing, the harness **MUST** be positioned **AT** or **JUST BELOW** the child's shoulders. If the harness straps are positioned **ABOVE** the child's shoulders, use the infant insert to adjust the fit.

- 3 - Pull harness buckle up through slot in bottom of insert.
- 4 - Route harness straps through sides of insert.
- 5 - Push insert firmly into child restraint.

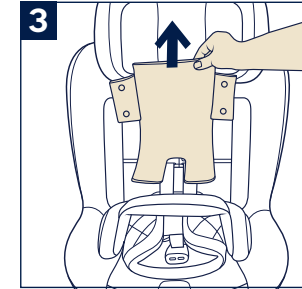
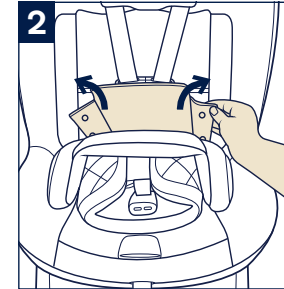
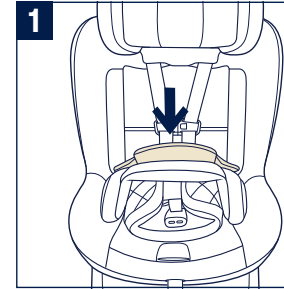
When properly installed, the infant insert will not interfere with harness straps or harness buckle.



## Infant Insert & Insert Wedge (cont.)

The infant insert wedge **MUST** be removed before cleaning the infant insert.

- 1** - To remove infant insert wedge, pull the top section of the infant insert forward.
- 2** - Undo all of the snaps on the infant insert wedge.
- 3** - Pull up to remove.





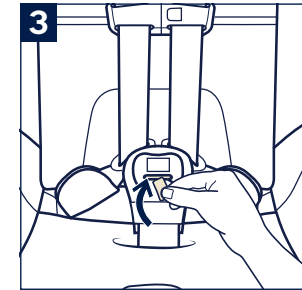
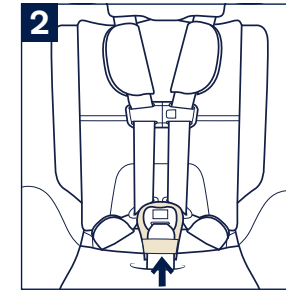
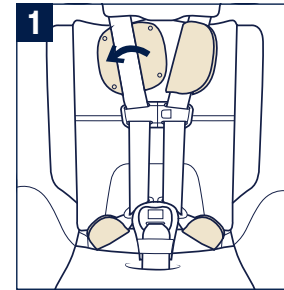
## Shoulder, Hip, and Crotch Pad

- 1 - **⚠ ALWAYS** use the shoulder, hip, and crotch pads.

To use the shoulder and hip pads, fold each pad in half over the harness strap and attach the snaps.

- 2 - To use the crotch pad, slide the harness buckle through the loop on the pad.

- 3 - Locate and insert the tab/strap between the harness buckle and crotch strap. Pull the tab through to the back of the harness buckle to secure the crotch pad.

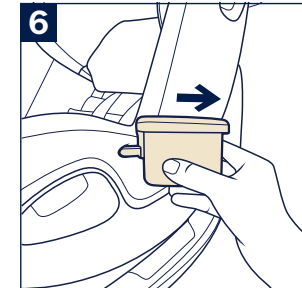
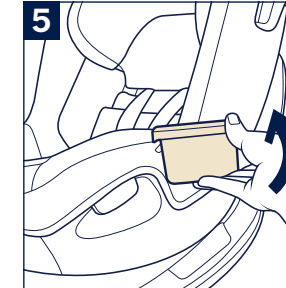
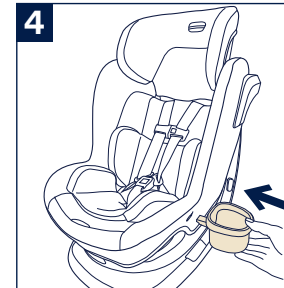


## Cup Holder

- 4 - Insert cup holder into opening on side of child restraint.

- 5 - To remove, lift up on the cup holder to release locking tab.

- 6 - Pull out to remove.



**DO NOT** place glass or metal containers or hard or sharp objects in cup holder. In a crash they could cause serious injury. **NEVER** use cup holder for hot beverages.

## Head Support Adjustment

There are 10 head support positions.

- 1 - With harness loose (p.22), squeeze head support button and move head support up or down to desired position.

Release head support button and slide head support slightly up or down until locked into position. The head support will click when it locks.

**CHECK** that head support is locked on both sides by pulling firmly up and down.

## Recline

There are 10 recline positions.

- 2 - Positions 1–5 (BLUE) are for rear facing use with children 5–40 lb (2.3–18 kg).

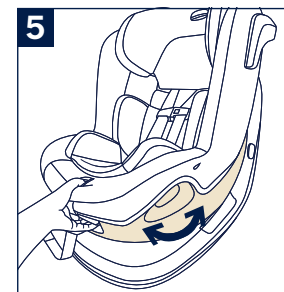
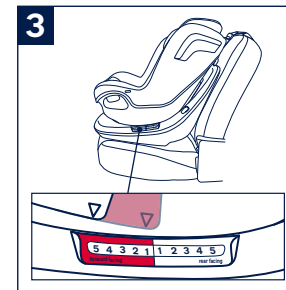
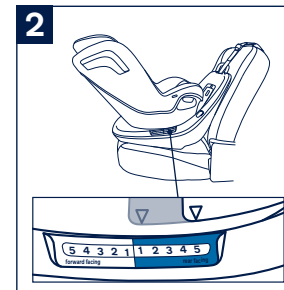
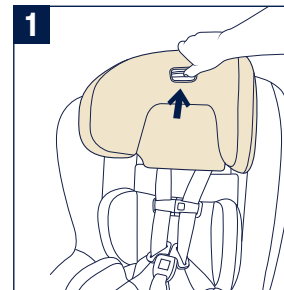
If infant's head falls forward, child restraint must be reclined more. Use infant insert with infants 5–11 lb (2.3–5 kg) to increase recline angle.

- 3 - Positions 1–5 (RED) are for forward facing use with children 30–40 lb (13.6–18 kg).

- 4 - Squeeze the recline handle at the front of the child restraint.

- 5 - Tilt seat to desired recline position 1-5 (BLUE rear facing or RED forward facing). Release recline handle and check that child restraint is locked in desired recline position.

**⚠ WARNING:** If you are using a lap only belt, you **MUST** use recline position 5 in both rear facing and forward facing modes.



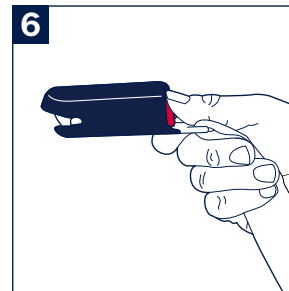
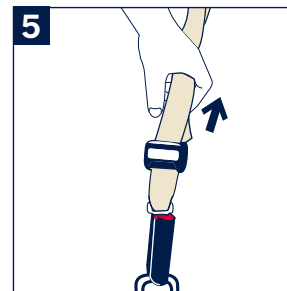
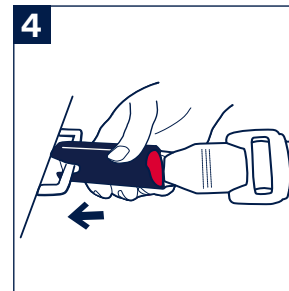
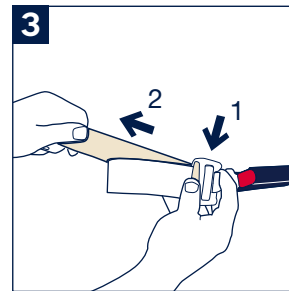
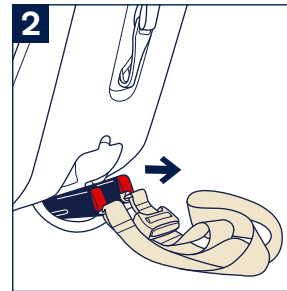
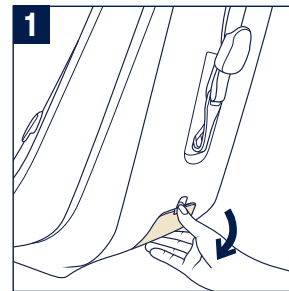
## Lower Anchors

The lower anchor belt can be used instead of a vehicle belt to install this child restraint. The lower anchor belt **MUST NOT** be used **rear facing** if your child weighs more than 35 lb (15.9 kg). The lower anchors can be used **forward facing** till the maximum weight limit of the seat (40 lb [18 kg]).

The lower anchor belt and connectors are stored on the back of seat base in lower anchor storage compartment.

- 1 - Open the lower anchor storage compartment door.
  - 2 - Take out the lower anchor belt and connectors.
  - 3 - Lengthen lower anchor belt for use by pressing adjuster button (1) while pulling on belt (2).
  - 4 - For belt routing, see p.50. To connect lower anchor belt to lower anchors in vehicle, press connector firmly onto lower anchor and pull to check.
  - 5 - Remove all slack from lower anchor belt by pulling loop at end of belt.
  - 6 - To release lower anchor belt, press red button on end of connector while pulling on belt.
- Store lower anchors when not in use. Place one lower anchor connector in each half of the storage compartment. Fold excess belt webbing into compartment.

**⚠ DO NOT** cut the lower anchor attachment strap. It permanently secures the lower anchors to the child restraint.



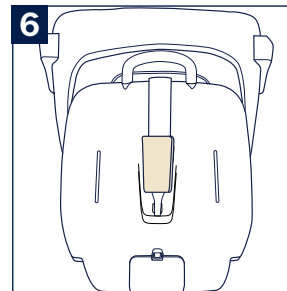
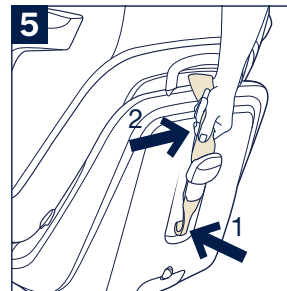
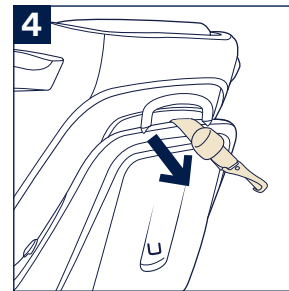
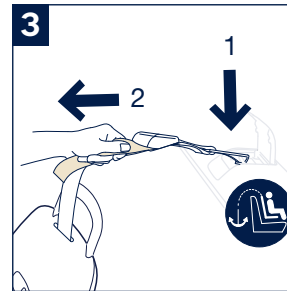
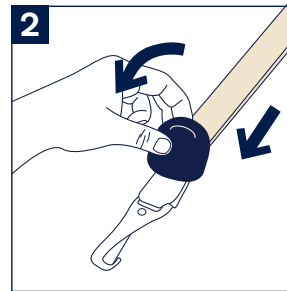
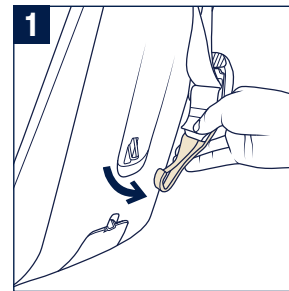
## Tether Setup

- 1 - You may need to loosen tether adjuster before unclipping from anchor. Unclip the tether hook by pushing in the back of the hook while pulling the hook down and off of the anchor. Tether should be routed **OVER** the handle. Follow instructions for vehicle belt routing on p.42.
- 2 - To extend tether for use, tilt tether adjuster and pull to lengthen.
- 3 - Locate the tether anchor in your vehicle; anchor locations can be found in your vehicle owner's manual. Look for the tether icon pictured here. With tether going **OVER** handle, attach the tether hook to the vehicle tether anchor (1). Once tether is anchored, tighten by pulling on tether strap to remove all slack (2).

## Tether Storage

- 4 - To store, thread the tether hook under the handle.
- 5 - Attach tether hook to the back of the child restraint (1) and remove slack from tether strap (2). When not in use, tether **MUST** be properly stored.
- 6 - Cover the tether adjuster with tether cover.

**⚠ WARNING: ALWAYS USE TETHER** for rear facing and forward facing installation, if vehicle is equipped with a tether anchor point and vehicle requirements are met (see vehicle owner's manual).

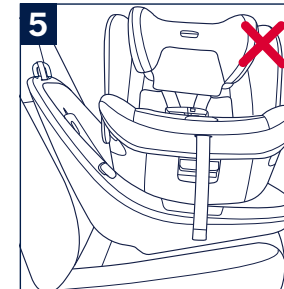
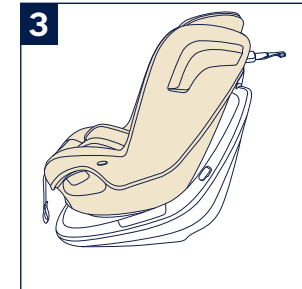
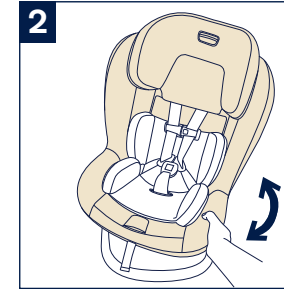
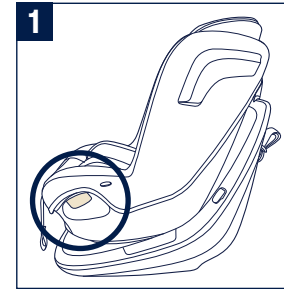


## Rotate Seat

- 1 - Press the rotate button on either side of the seat.
- 2 - Rotate the seat rear facing or forward facing, until it clicks into place.
- 3 - Seat forward facing
- 4 - Seat rear facing

Ensure the seat is locked in your chosen position by releasing the rotate button and moving side-to-side slightly until you hear a click.

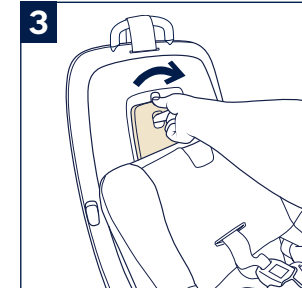
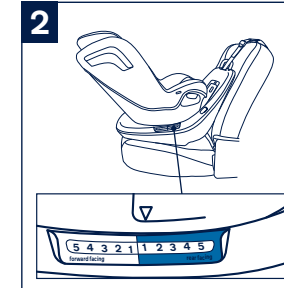
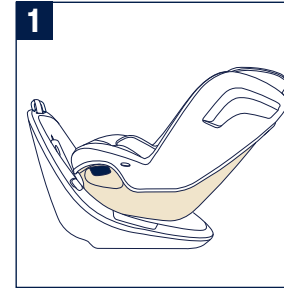
- 5 - **⚠ NEVER** use seat in an unlocked side position when traveling in vehicle.



## True Tension™ Door

This child restraint has a True Tension™ door that aids in a simple and secure installation of the child restraint in your vehicle. It is located on the front side of the anti-rebound panel/base.

- 1 - Rotate the seat to rear facing position to access the True Tension™ door.
- 2 - Seat must be in the upright recline position "1" to better access the True Tension™ door.
- 3 - Lift door release button to open the True Tension™ door. Follow instructions for vehicle belt routing on p.42.
- 4 - Close True Tension™ door by pressing firmly on door until it latches in place.

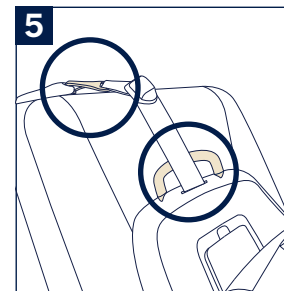
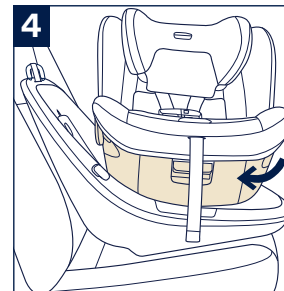
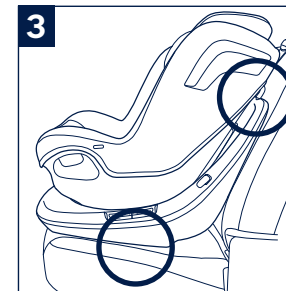
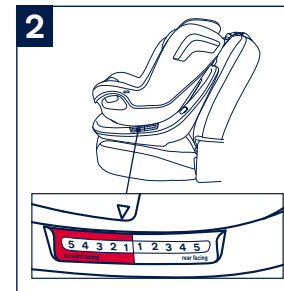
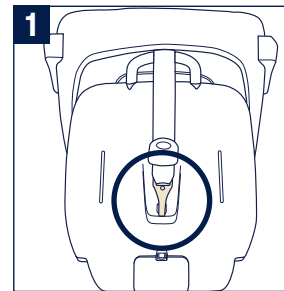


# Child Restraint Installation

## Vehicle Seat Belt

- 1 - You may need to loosen tether adjuster before unclipping from anchor. Unclip the tether hook by pushing in the back of the hook while pulling the hook down and off of the anchor.
- 2 - Place child restraint on selected vehicle seat. Squeeze the recline handle and put the seat in the most upright position.
- 3 - Place child restraint forward facing in a compatible vehicle seat (p.12). With the bottom of the child restraint parallel to the vehicle seat bottom, slide the seat back until the handle of the child restraint contacts the vehicle seat back.
- 4 - Rotate the seat rear facing to access True Tension™ door.
- 5 - Route the tether hook over the handle and attach to the vehicle tether anchor. Do not tighten the strap yet.
- 6 - Open the True Tension™ door.

Complete installation using your vehicle's Lap/Shoulder belt (p.44), a compatible vehicle Lap belt only (p.46), or the Lower Anchor belt (p.50)



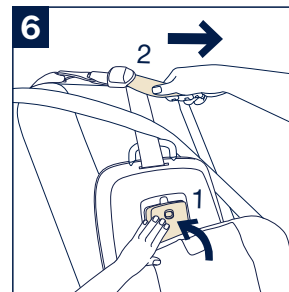
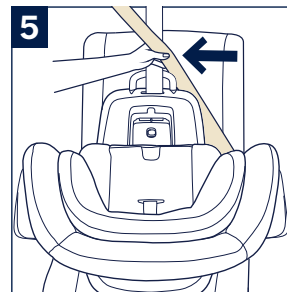
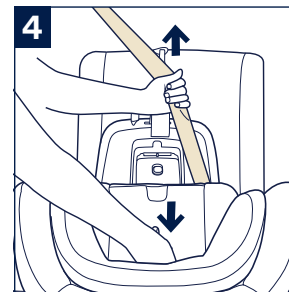
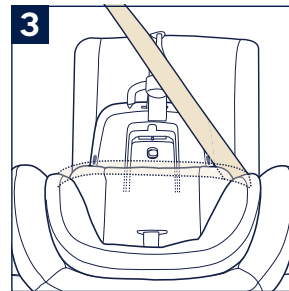
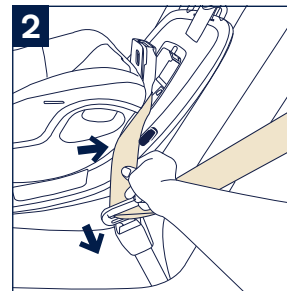
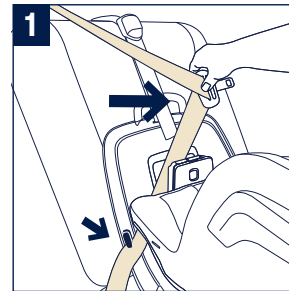
### If using lap/shoulder belt (preferred installation method)

- 1 - Attach the tether hook loosely to the vehicle tether anchor. Pull the vehicle seat belt across the anti-rebound panel and under the True Tension™ door. If possible, secure the vehicle lap belt under the belt positioner.
- 2 - With the lap belt portion routed under the True Tension™ door and secured under the second belt positioner, buckle the vehicle seat belt.
- 3 - Check the vehicle seat belt; make sure it is not twisted and is laying flat across the anti-rebound panel. Remove any slack. Ensure the lap belt is routed under the door.
- 4 - Then while pushing down firmly on the car seat, pull up on the vehicle shoulder belt to remove the slack. Pull the shoulder belt out all the way to switch the retractor. Now when you release it, the belt will automatically lock when pulled (consult vehicle manual).
- 5 - Route the vehicle shoulder belt behind the anti-rebound panel and over tether strap.

**PULL** up on the **SHOULDER BELT** again to remove any slack.

- 6 - Close the True Tension™ door (1). Tighten the tether by pulling on the tether adjustment strap (2).

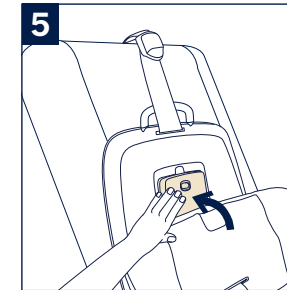
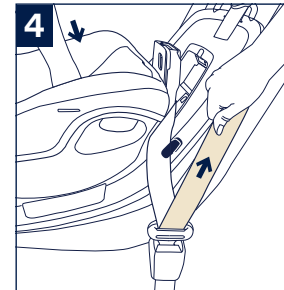
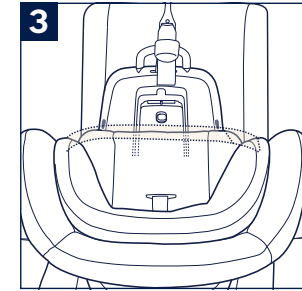
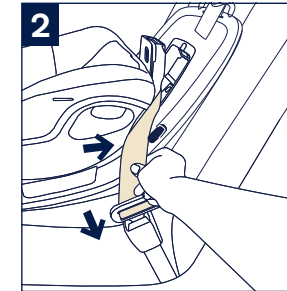
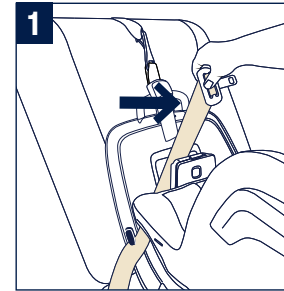
**⚠ WARNING:** Check that child restraint is securely installed before each use. Hold seat at the belt path and move seat in all directions. Seat should move less than 1 inch.





### If using lap belt only

- 1 - Attach the tether hook loosely to the vehicle tether anchor. Pull the vehicle seat belt across the anti-rebound panel and under the True Tension™ door. If possible, secure the vehicle lap belt under the belt positioner.
- 2 - With the lap belt routed under the True Tension™ door and secured under the second belt positioner, buckle the vehicle seat belt.
- 3 - Check the vehicle seat belt, make sure it is not twisted and is laying flat across the rebound panel.
- 4 - While pushing down firmly on the car seat, pull on the vehicle belt to remove the slack.
- 5 - Close the True Tension™ door.



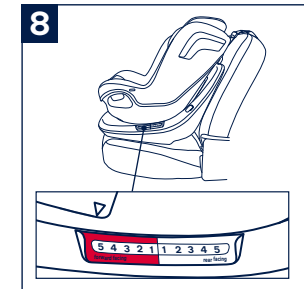
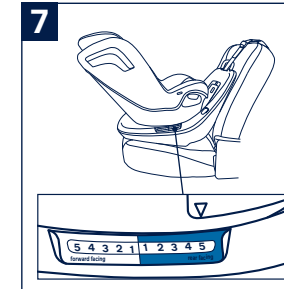
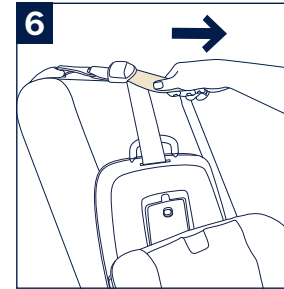
## If using lap belt only (cont.)

**6** - Tighten the tether by pulling on the tether adjustment strap.

**7 & 8** - Recline the seat to position 5 for either rear facing (**7**) or forward facing (**8**).

**⚠ WARNING:** If you are using a lap only belt, you **MUST** use recline position 5 in both rear facing and forward facing modes.

**⚠ WARNING:** Check that child restraint is securely installed before each use. Hold seat at the belt path and move seat in all directions. Seat should move less than 1 inch.

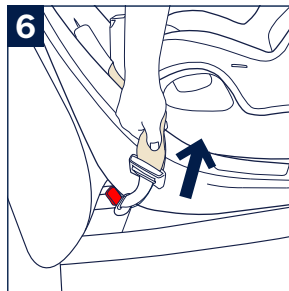
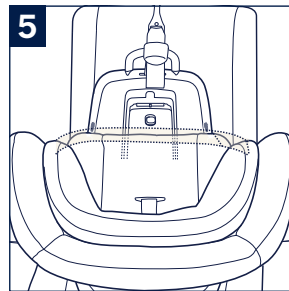
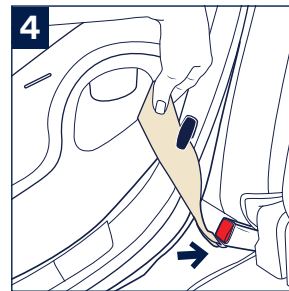
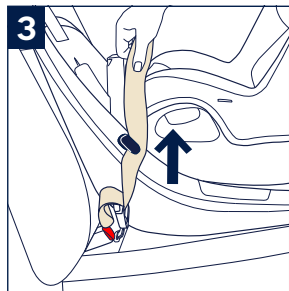
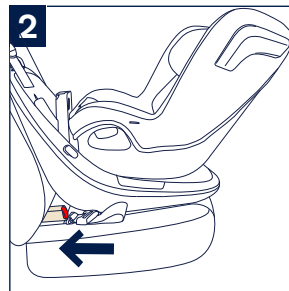
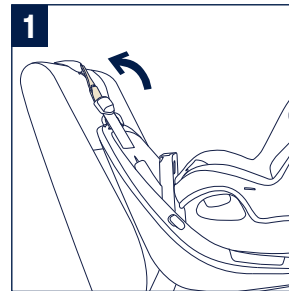


## If using lower anchor belt

The lower anchor belt and connectors are stored in the lower anchor storage at the back of the child restraint.

**⚠ WARNING:** Do not install by this method for a child weighing more than 35 lb (15.9 kg) rear facing. The lower anchors can be used forward facing till the maximum weight limit of the seat (40 lb [18 kg]).

- 1 - Attach the tether hook loosely to the vehicle tether anchor.
- 2 - Lengthen lower anchor belt for use by pressing adjuster button (p.34) while pulling on belt. Attach one of the lower anchor connectors.
- 3 - Route the other end of the lower anchor belt across the anti-rebound panel and under the True Tension™ door. If possible, secure the lower anchor belt under the belt positioner.
- 4 - Attach the other lower anchor connector.
- 5 - Check the lower anchor belt, make sure it is not twisted and is laying flat across the rebound panel.
- 6 - While pushing down firmly on the car seat, pull up on the lower anchor adjuster strap to remove the slack.



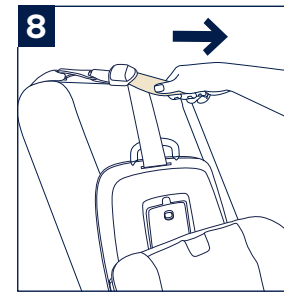
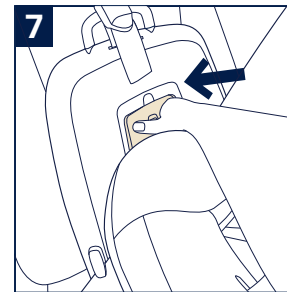
**7** - Close the True Tension™ door.

**8** - Tighten the tether by pulling on the tether adjustment strap.

**⚠ DO NOT** cut the lower anchor attachment strap. It permanently secures the lower anchors to the child restraint.

**⚠ WARNING:** Check that child restraint is securely installed before each use. Hold seat at the belt path and move seat in all directions. Seat should move less than 1 inch.

**⚠ WARNING: DO NOT** install with **both** the vehicle seat belt and lower anchor belt.

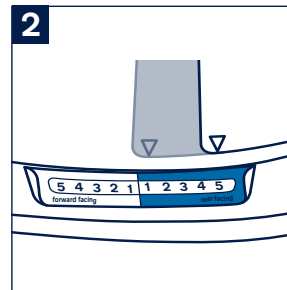
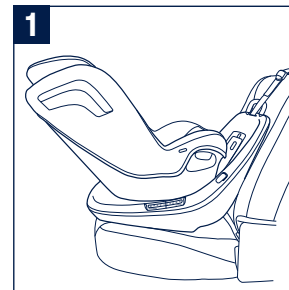
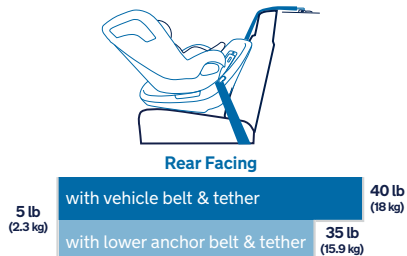


# Rear Facing Installation

Birth to 2+ years, 5–40 lb (2.3-18 kg),  
43 in. (1100 mm) or less

⚠ See pgs. 42–52 for complete installation instructions.

⚠ **ALWAYS** use the shoulder, hip, and crotch pads. Use infant insert with infants 5–11 lb (2.3–5 kg) to improve the recline angle for smaller infants.



## Rear Facing Setup

- 1 - Rotate the seat rear facing. Push or pull on seat to make sure the seat is **LOCKED**.
- 2 - Select rear facing recline position 1–5 (BLUE) (p.32).
- 3 - If you are using a lap belt only, you must use recline position 5.

### Check Installation

- ☐ Seat is in rear facing recline position.
- ☐ Tether is properly used and attached to vehicle tether anchor.
- ☐ Seat is securely installed. Hold seat at the belt path and move seat in all directions. Seat should move less than 1 inch.

## Forward Facing Installation

At least 2 years old and 30 lb, 30–40 lb (13.6-18 kg),  
43 in. (1100 mm) or less

⚠ See pgs. 42–52 for complete installation instructions.

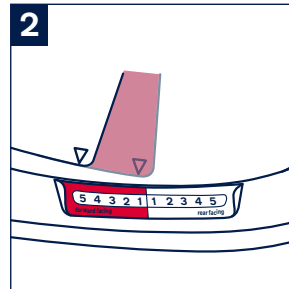
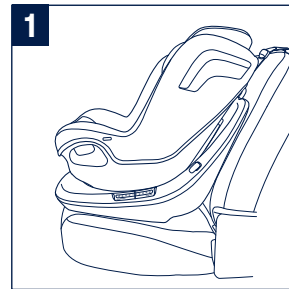
⚠ **ALWAYS** use the shoulder, hip, and crotch pads.

### Forward Facing Setup

- 1 - Rotate the seat forward facing. Push or pull on seat to make sure the seat is **LOCKED**.
- 2 - Select desired forward facing recline position 1–5 (**RED**) (p.32).
- 3 - If you are using a lap belt only, you must use recline position 5.

#### Check Installation

- ☐ Seat is in forward facing recline position.
- ☐ Tether is properly used and attached to vehicle tether anchor.
- ☐ Seat is securely installed. Hold seat just below the belt path and move seat in all directions. Seat should move less than 1 inch.



# Securing Child

**⚠ WARNING:** If your child is not properly secured in the child restraint, they may be ejected in a crash, resulting in serious injury or death.

Loosen and unbuckle harness. Retain with magnetic buckle tongue holders (p.22).

- 1 - Place child in child restraint with child's back flat against child restraint seat back. **DO NOT** allow child to slouch.

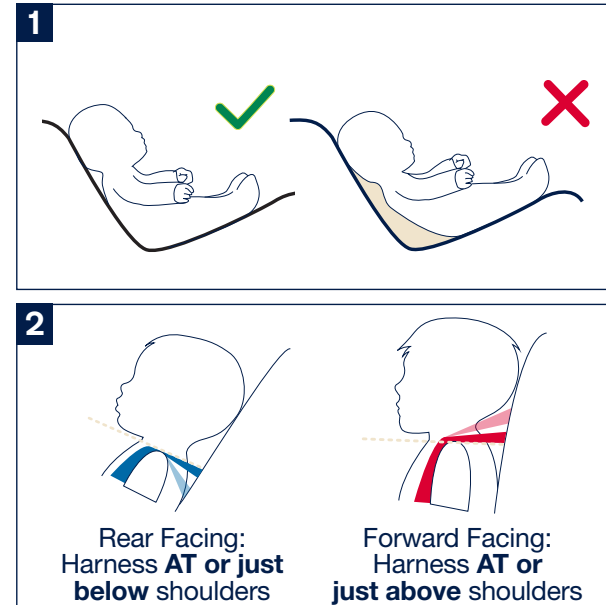
If child's head falls forward, recline the seat more.

- 2 - For **rear facing** use, adjust head support (p.32) to position harness **AT or just below** shoulders.

If infant's head falls forward, child restraint must be reclined more. Use infant insert with infants 5–11 lb (2.3–5 kg) to increase recline angle.

For **forward facing** use, adjust head support (p.32) to position harness **AT or just above** shoulders.

Position harness over child's shoulders and around child's waist, and buckle harness.



- 3** - Remove slack from shoulder straps and waist belt by pulling up on shoulder straps **(1)**. Pull harness adjustment strap **(2)** to tighten. Harness should fit snugly on child's shoulders and thighs; it is snug if you cannot pinch a fold in the strap horizontally. Fasten and position chest clip (p.22) level with child's armpits **(3)**.

A snug strap should not allow any slack. It lies in a relatively straight line without sagging. It does not press on the child's flesh or push the child's body into an unnatural position.





# Cleaning and Maintenance

## Cleaning the Seat Cover, Harness Pads, and Infant Insert

Seat cover, harness pads, and infant insert can be cleaned according to the instructions on the tag attached to the seat cover. Infant insert wedge should be spot cleaned only.

## Cleaning the Harness

The child restraint harness system cannot be removed. **DO NOT attempt to remove the harness system.** When required, harness may be cleaned with a cloth and warm, soapy water.

Towel dry excess water and allow to air dry.

## Cleaning the Shell

Shell may be cleaned with a damp cloth.

Towel dry.

**DO NOT** use abrasive cleansers on the shell.

## Cleaning the Buckle

**BUCKLE CANNOT BE REMOVED.**

To clean buckle, wipe with damp cloth.

**DO NOT** use bleach or other harsh chemicals to clean any part of the seat.

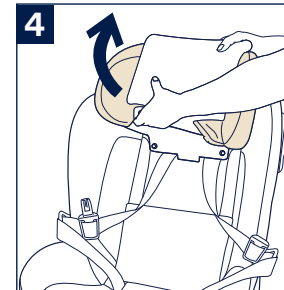
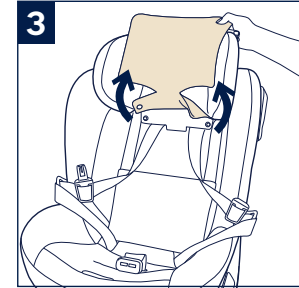
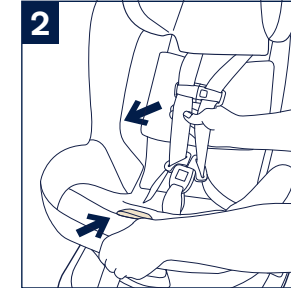
**DO NOT** attempt to iron the covers or pads.

**DO NOT** attempt to lubricate the spin mechanism.

# Softgoods Removal

## Head Support

- 1** - Remove shoulder harness pads, infant insert, infant insert wedge, head insert, hip harness pads, and crotch pad. Lift the head support to the highest position.
- 2** - Loosen harness straps, undo the chest clip and harness buckle.
- 3** - Lift up on the head support lower section and undo the two head support snap buttons.
- 4** - Pull head support fabric up and over the head support frame sides. At the same time guide the elastic strap up the back of the head support frame. Remove the head support fabric.



## Softgoods Removal (cont.)

### Seat Cover

- 1 - Move the head support to the lowest position.
- 2 - Undo seat pad snap buttons on the inside of the seat. Pull the harness buckle through the seat cover and place the harness straps in the seat shell.
- 3 - Undo 2 side snap buttons on the seat cover, and repeat for the other side.
- 4 - Pull forward on the front edge of the seat cover fabric and release both fabric stiffeners.
- 5 - Locate the side impact protection pod and pull down on the bottom edge. Guide the fabric opening around and off the impact protection pod; repeat for the other side.
- 6 - Lift up on the seat cover and remove it from the car seat shell.

Nuna Baby Essentials, Inc. Nuna and all associated logos are trademarks.

