

nuna®



ivvi™
totl system™

instructions

Contents

Important Information

Safety and Recommendations	4
Warnings	6
Parts List	12

IVVI Stroller

How to Set Up the IVVI Stroller	14
How to Use the IVVI Stroller	18

IVVI Bassinet

How to Set Up the IVVI Bassinet	24
How to Use the IVVI Bassinet with the IVVI Stroller	26

Accessories

IVVI Infant Car Seat Post Adapters	28
IVVI Infant Car Seat Ring Adapter	30
IVVI Stroller Rain Cover	32
IVVI Stroller Footmuff	32
IVVI Stroller Child Tray & Toddler Handle	34
IVVI Stroller Removeable Basket	36

Cleaning and Maintenance 38

Warranty, Production Registration and Contact 39

Safety and Recommendations

Please take note of the following before using the Nuna IVVI totl system.

Safety is very important to us and you can be assured that our products comply with the relevant standards and that they have been tested by a number of independent testing laboratories.

The IVVI stroller is a patented product and complies with US safety standards and ASTM F833.

The IVVI bassinet is a patented product and complies with US safety standards, ASTM 2194 and ASTM F2050.

If you have any questions or comments regarding the IVVI totl system, we will be glad to hear them through our website nuna.eu

**IMPORTANT!
KEEP THESE INSTRUCTIONS
FOR FUTURE REFERENCE:
READ CAREFULLY BEFORE
ASSEMBLY AND USE
OF THE BASSINET.**

⚠️ WARNINGS

Failure to follow these warnings and instructions could result in serious injury or death.

IVVI totl system

A child's safety is your responsibility.

NEVER leave child unattended. Always keep your child in view while in this product.

To avoid any danger of suffocation, remove all plastic covers before using this product and destroy or keep away from babies and children!

Keep small parts away from children as they pose a choking hazard.

DO NOT let your child play with this product.

DO NOT place any item on the canopy of this product.

DO NOT leave this product exposed in the vicinity of a strong source of heat i.e. a radiator or open fire or store this product in a damp place.

ALWAYS allow the fabric to dry naturally away from direct heat.

Discontinue using these products should they become damaged or broken.

Use original Nuna parts and accessories only.

IVVI stroller

This stroller is intended for children from birth and up to 50 lbs maximum.

Use of the stroller with a child weighing more than 50 lbs (22.7 kg) or 45 in. (114.3 cm) will cause excessive wear and stress on the stroller.

We recommend using the most reclined position for newborn babies.

NEVER carry more than one child at a time in this product.

Avoid serious injury from falling or sliding out. Always use seat belt. After fastening buckles, adjust belts to get a snug fit around your child.

To prevent a hazardous, unstable condition, do not place more than 10 lbs (4.5 kg) in the stroller storage basket.

DO NOT use storage basket as a child carrier.

AVOID FINGER ENTRAPMENT Use care when folding and unfolding the stroller. Be certain the stroller is fully erected and latched before allowing your child near the stroller.

NEVER use the stroller on stairs or escalators. You may suddenly lose control of the stroller or your child may fall out.

Negotiate curbs and rough ground carefully. Repeated impact will cause damage to this product.

This stroller is to be used only at walking speed. Product is not intended for use while jogging, skating, etc.

Adding accessories such as purses, shopping bags, or parcels to the handle or canopy can cause the stroller to be unstable.

Overloading, incorrect folding, and using accessories other than those approved by Nuna, e.g. child seats, bag hooks, rain covers, buggy boards, etc., may damage or make this stroller unsafe.

The parking brake should be engaged when the stroller is stopped and when placing and removing child.

NEVER allow children to stand on the footrest.

This stroller does not replace a crib or a bed. Should your child need to sleep, they should be placed in a crib or approved sleeping area based on your child's requirements.

Always check that the seat unit, the bassinet, and car seat attachment devices are correctly engaged before use.

IVVI bassinet

The bassinet is suitable for use with children who weigh up to 20 lbs (9 kg) (birth–6 months) and whose height is 27 in. (68 cm) or less.

FALL HAZARD To help prevent falls, do not use the bassinet when the infant begins to push up on hands and knees or has reached 20 lbs (9 kg), whichever comes first.

SUFFOCATION HAZARD

Infants have suffocated:

- In gaps between extra padding and side of the bassinet, and
- On soft bedding.

DO NOT use a sheet or any other bedding products not provided by Nuna with your bassinet.

USE ONLY the pad provided by manufacturer. **NEVER** add a pillow, comforter, or another mattress for padding.

To reduce the risk of SIDS, pediatricians recommend healthy infants be placed on their backs to sleep, unless otherwise advised by your physician.

NEVER use this bassinet in a vehicle as a child restraint.

STRANGULATION HAZARD Strings can cause strangulation! Do not place items with a string around your child's neck, suspend strings from this product, or attach strings to toys.

When using the Bassinet on the IVVI stroller in Carry Cot Mode

The bassinet when used on the IVVI stroller in carry cot mode is suitable for use with children who weigh up to 20 lbs (9 kg) (birth–6 months) and whose height is 27 in. (68 cm) or less.

To prevent a hazardous or unstable condition, do not place more than 3 lb (1.4 kg) in the accessory pocket.

FALL HAZARD Child's movement can slide bassinet. **NEVER** place bassinet near edges of counter tops, tables, or other elevated surfaces.

SUFFOCATION HAZARD Bassinet can roll over on soft surfaces and suffocate child. **NEVER** place bassinet on beds, sofas, or other soft surfaces.

NEVER leave a child in the bassinet when ascending or descending stairs or escalators.

IVVI Infant Car Seat Post and Ring Adapters

Use the infant car seat adapters only with the IVVI stroller and approved Nuna PIPA™ infant car seat.

DO NOT exceed the maximum weight limit specified for the infant car seat.

DO NOT move the stroller by the handle of the infant car seat.

The infant car seat adapter interface may present a pinching hazard. Ensure all fingers and appendages are clear of the infant car seat adapters when attaching the infant car seat.

DO NOT place any accessories on the handlebar when using the IVVI stroller with the infant car seat adapters, as the stroller may become unstable.

Read all instructions provided by the car seat manufacturer and the stroller manufacturer before use of the adapters.

IVVI Footmuff

When using the footmuff, always use the safety harness. The footmuff should not cover the child's face.

IVVI Child Tray & Toddler Handle

The child tray is not designed to restrain the child; use the stroller harness at all times.

To prevent a hazardous or unstable condition, do not place more than 1 lb (0.5 kg) in the child tray.

DO NOT use the child tray or toddler handle to lift or carry the stroller.

DO NOT use the toddler handle to carry bags or any heavy items. Any load attached to the toddler handle affects the stability of the stroller.

DO NOT use the child tray or cup holder for hot foods or beverages and always wash before/after each use (see cleaning instructions).

Parts List

Make sure all parts are available before assembly. If any part is missing, please contact Nuna (see page 39 for information). No tools are required for assembly.

⚠ CHOKING HAZARD: Remove and immediately discard protective end caps from each wheel and wheel hub axle.

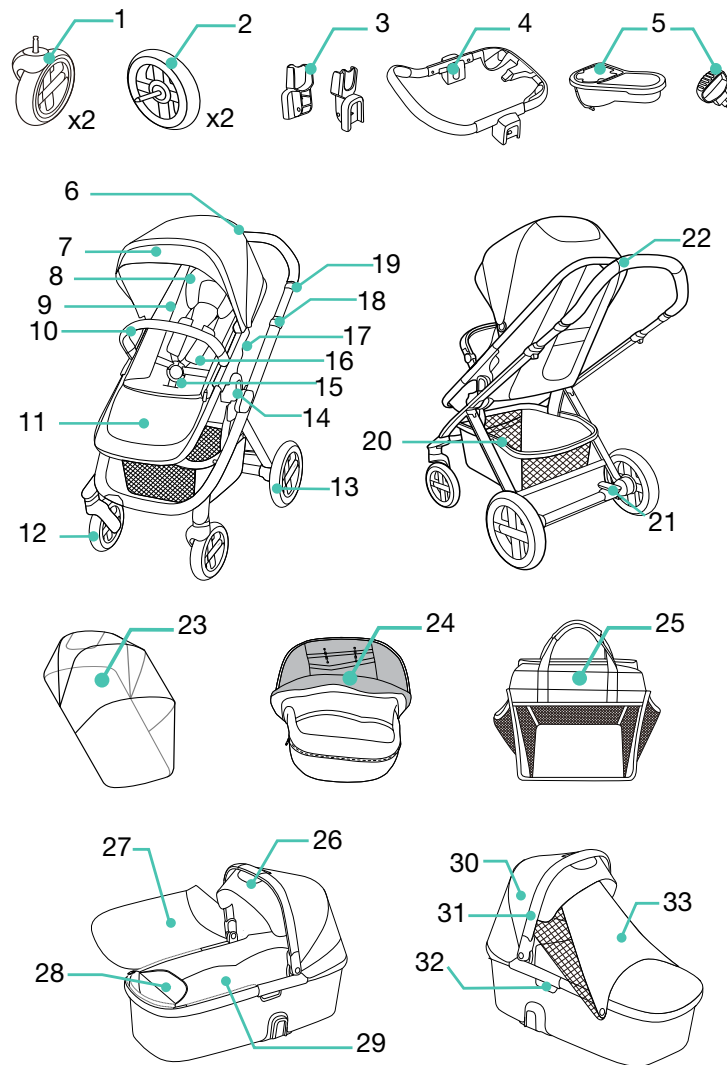
IVVI Stroller

- 1 Front Wheel (x2)
- 2 Rear Wheel (x2)
- 3 Infant Car Seat Post Adapters
- 4 Infant Car Seat Ring Adapter
- 5 Child Tray & Toddler Handle
- 6 Stroller
- 7 Stroller Canopy
- 8 Head Support
- 9 Seat Pad
- 10 Armbar
- 11 Calf Support
- 12 Front Wheel
- 13 Rear Wheel
- 14 Seat Mount
- 15 Buckle and Crotch Cover
- 16 Shoulder Harness Pads
- 17 Seat Release Button
- 18 Folding Button

- 19 Handle Adjustment Button
- 20 Storage Basket
- 21 Brake Lever
- 22 Stroller Handle
- 23 Rain Cover
- 24 Footmuff
- 25 Stroller Removeable Basket

IVVI Bassinet

- 26 Bassinet
- 27 Cover
- 28 Accessory Pocket (maximum load = 3 lbs)
- 29 Mattress Pad
- 30 Canopy
- 31 Handle
- 32 Release Button
- 33 Dream Drape



How to Set Up the IVVI stroller

Check that you have all the parts for this product before using it.

The assembly should be performed only by adults.

Open Stroller

- 1 - Rotate handle up.
- 2 - Align the sides of the seat with the seat mounts.

Place the seat directly down until it clicks into place. A “click” sound means the seat is assembled completely.

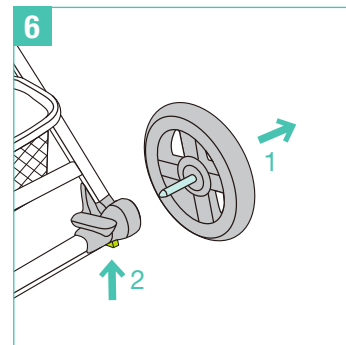
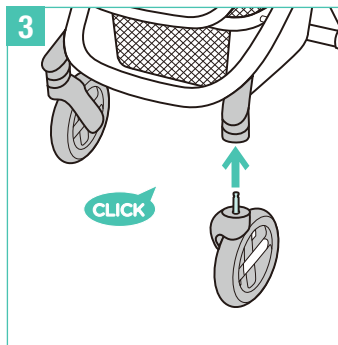
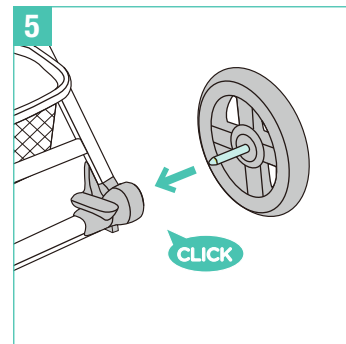
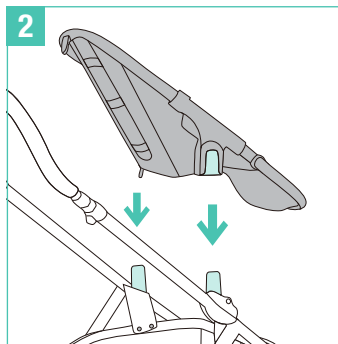
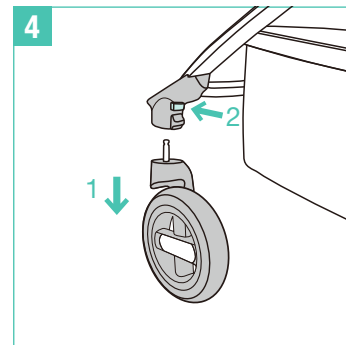
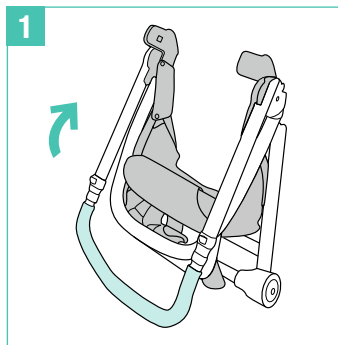
Check that the stroller is completely open before continuing.

Assemble Front Wheels

- 3 - Insert front wheels into front legs and listen for a “click” sound. Check that wheels are securely attached by pulling down.
- 4 - To disassemble front wheel, detach front wheel from front leg (1) while pressing the release button. (2)

Assemble Rear Wheels

- 5 - Insert rear wheels into rear legs and listen for a “click” sound. Check that wheels are securely attached by pulling outward.
- 6 - To disassemble rear wheel, detach rear wheel from rear leg (1) while pressing the release button. (2)

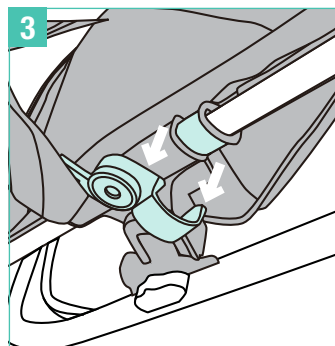
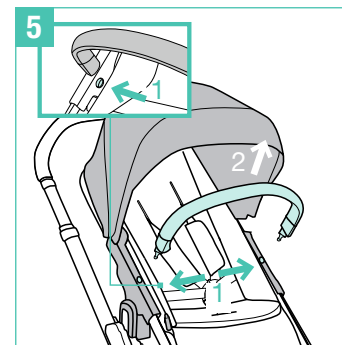
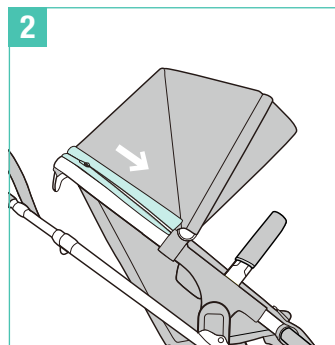
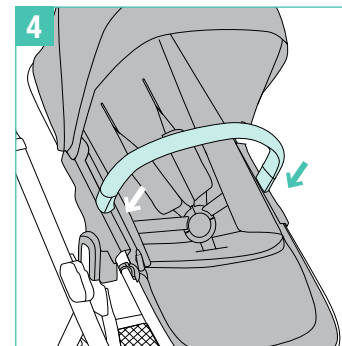
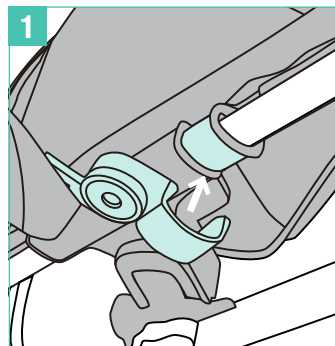


Assemble Canopy

- 1 - Clip the canopy mounts onto the seat.
- 2 - Then close the zippers.
- 3 - To remove the canopy, open the zippers, then remove the canopy mount.

Assemble Armbar

- 4 - Align the armbar ends with the armbar mounts, and then insert to lock.
- 5 - To disassemble armbar, press armbar release button (1), and then pull out the armbar. (2)
- 6 - The completely assembled stroller is shown.




How to Use the IVVI stroller

Secure Child

- 1 - To release the buckle latch, push on center button and remove the clips.
- 2 - To secure child, assemble buckle.
- 3 - Connect shoulder buckle and hip buckle together as shown, and together secure in buckle latch.
- 4 - Repeat on opposite side.
- 5 - Fit harness snugly to child by sliding each adjustment buckle.

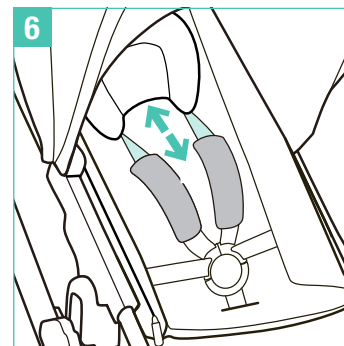
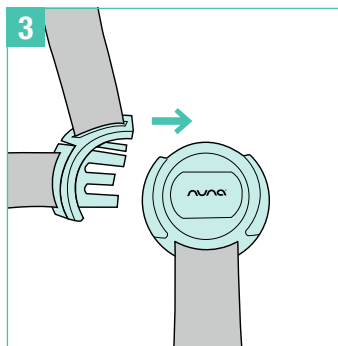
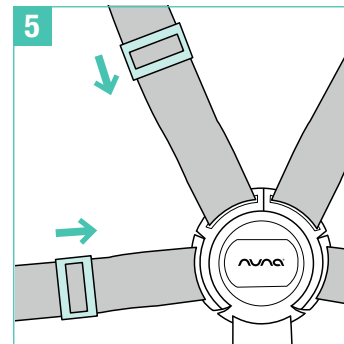
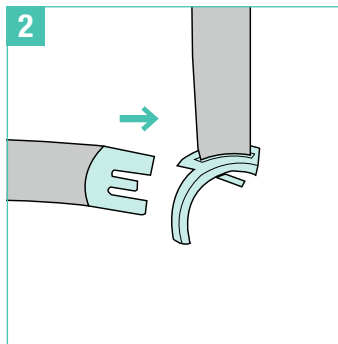
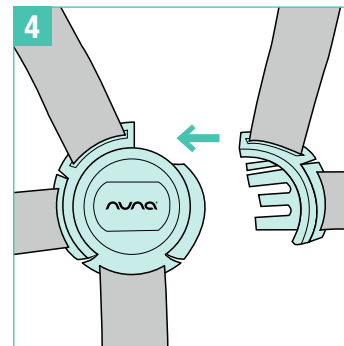
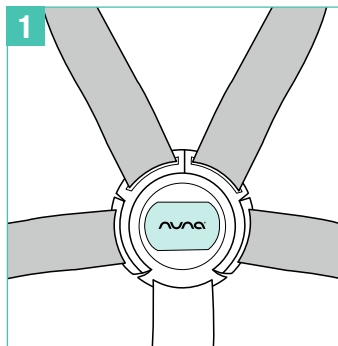
Adjust Shoulder Harness Position

- 6 - The shoulder belt can be adjusted up and down.

 To avoid serious injury from falling or sliding out, always secure your child with harness.

Make sure your child is snugly secured. The space between the child and the shoulder harness should be about the thickness of one hand.

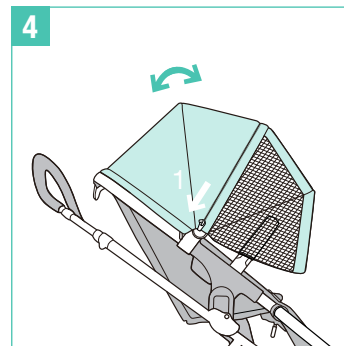
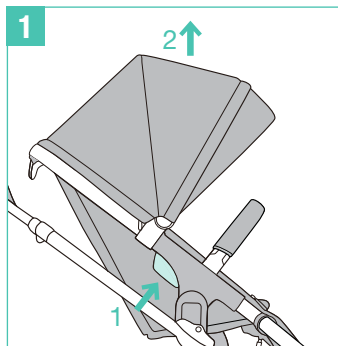
Do not cross the shoulder belts. This will cause pressure on your child's neck.



Switch Seat

The seat can be switched to face front or to face the parent.

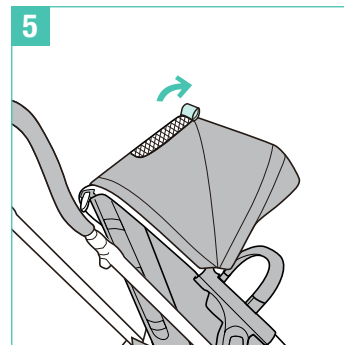
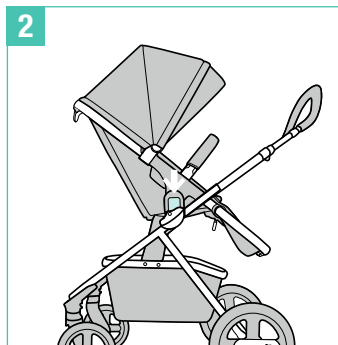
- 1 - Squeeze the seat release buttons **(1)** while lifting the seat **(2)**.
- 2 - Turn the seat the reverse direction and align the sides of the seat with the seat mounts. Place the seat directly down until it clicks into place. A “click sound” means the seat is assembled completely.



Adjust Recline

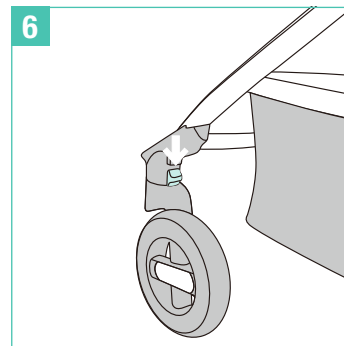
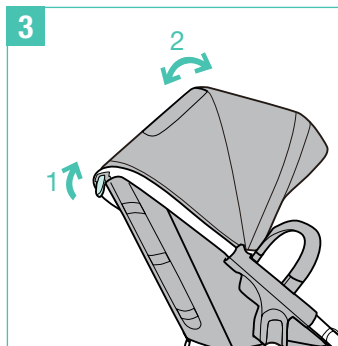
There are 3 positions for the backrest.

- 3 - To raise the backrest, squeeze the adjustment button, and push up. **(1)** To recline the backrest, squeeze the adjustment button and pull, then adjust the backrest to a desired angle. **(2)**



Canopy Use

- 4 - To open the canopy, pull canopy toward front.
Open the zippers on the canopy to use extra flap. **(1)**
To fold the canopy, pull canopy toward back.
- 5 - To open the canopy window, roll fabric and secure with magnet.



Front Swivel Locks

- 6 - Push down the front swivel locks to lock front wheels facing forward. It is recommended to use swivel locks on uneven surfaces.

Brake

- 1 - To lock wheels, step on brake lever and push down.
- 2 - To release wheels, step on the brake lever and push forward. Always apply brake when stroller is in stopped position.

Adjust Calf Support

The calf support has 2 positions.

- 3 - To raise the calf support, push it up. To lower calf support, press the adjustment button in the middle of footrest (1), and rotate the footrest down. (2)

Adjust Handle

The handle has 6 positions.

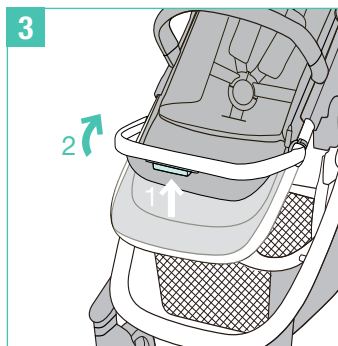
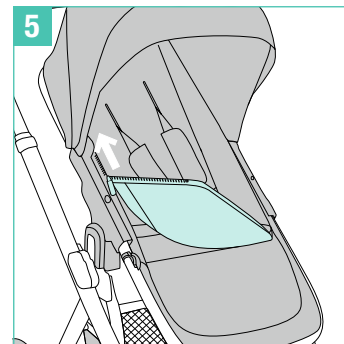
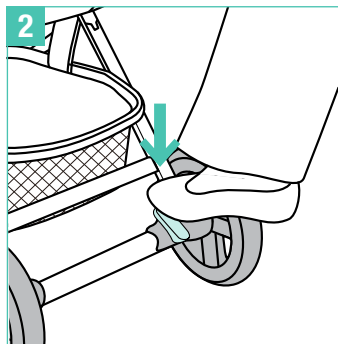
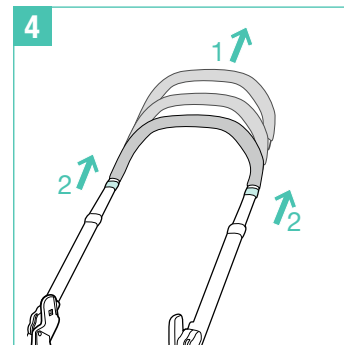
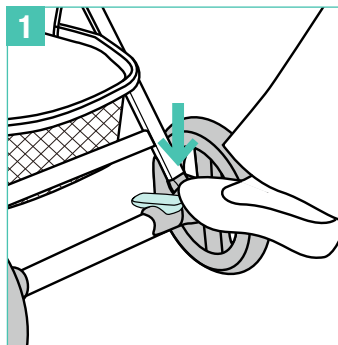
- 4 - To adjust the height of the handle, pull the handle up or down (1) while pulling up on the handle adjustment button. (2)

Seat Pad

- 5 - When removing the seat pad, open the zippers around the seat pad.

Use seat pad in cold weather to provide a comfortable seating area. The seat pad can be removed to provide a mesh seating area for better ventilation during hot weather.

- ⚠ Do not remove backrest tube.



Fold Stroller

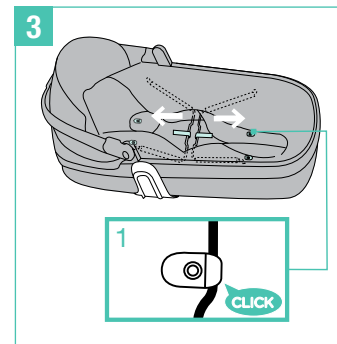
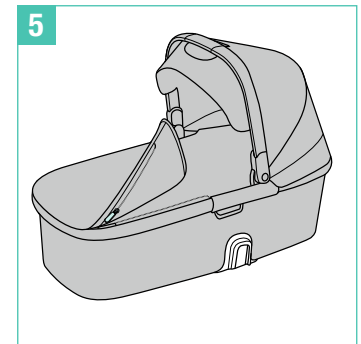
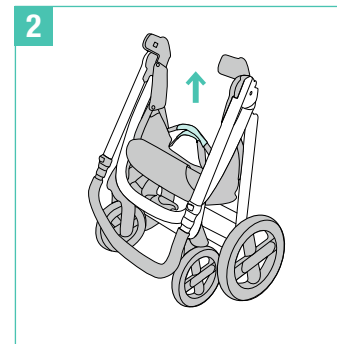
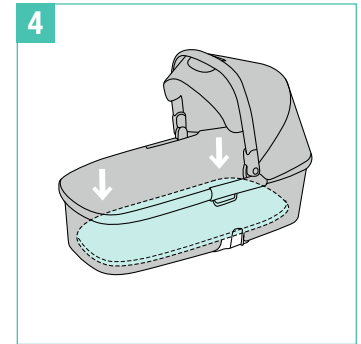
Remove stroller seat before folding.

- 1 - Lift the folding button **(1)** and rotate the handle forward **(2)**.
- 2 - Lift the webbing in the basket of the stroller to transport after folding.

How to Set Up the IVVI Bassinet

Assemble Bassinet

- 3 - Open the wire support on both sides of the bassinet. Click the wire into the four plastic parts. A "click" sound means the wire support is secure. **(1)**
 - 4 - Place the mattress pad into the bassinet and smooth it down.
- !** Always use the mattress pad when using the bassinet. Mattress pad cover can easily be removed to wash.
- 5 - Attach the bassinet cover to the bassinet with the zippers on either side.



Adjust Canopy

1 - Pull canopy towards front end to secure.

⚠ Be sure the handle is locked in the forward most upright position before lifting bassinet by the handle.

Close the canopy by pressing the folding buttons on both sides. (1)

Canopy Features

2 - Fold the rear panel of the bassinet canopy up for more ventilation.

3 - Pull the dream drape out from under the bassinet canopy.

4 - Then secure it to the two sides of the bassinet with magnets.

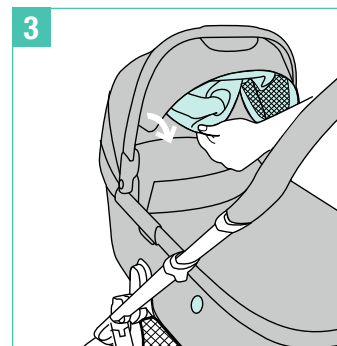
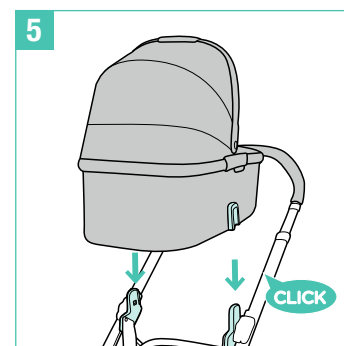
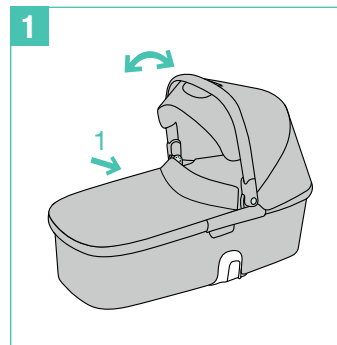
How to Use the IVVI Bassinet with the IVVI Stroller

Attach Bassinet onto Stroller Frame

Align the sides of the bassinet with the seat mounts on the frame.

5 - Place the bassinet directly down until it clicks into place. A “click” sound means bassinet is assembled completely.

Do not fold stroller when bassinet is attached.



Remove Bassinet

- 1 - Press release buttons on both sides of bassinet and then lift up.

Accessories

⚠ Not all accessories are included on some models.

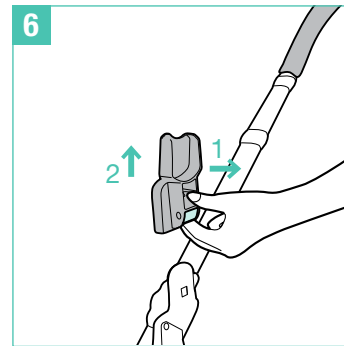
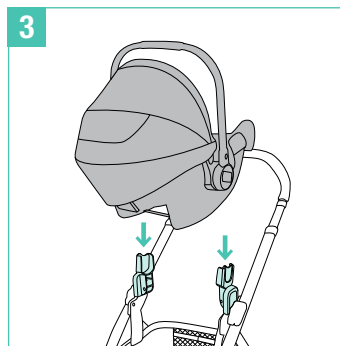
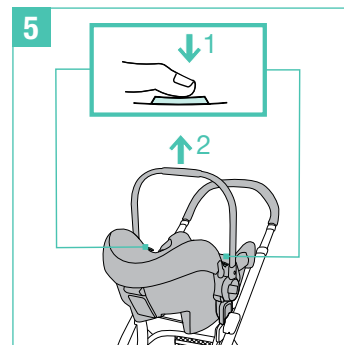
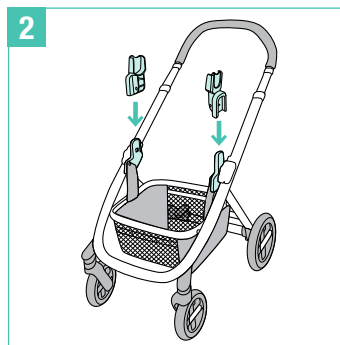
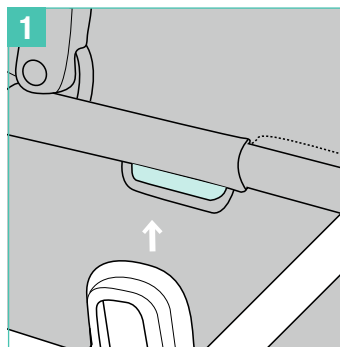
IVVI Infant Car Seat Post Adapters*

*car seat not included

- 2 - To attach infant car seat post adapters, place post adapters onto seat mounts as shown. A “click” sound means the adapters are locked.
- 3 - To attach infant car seat, place onto post adapters as shown.
- 4 - A “click” sound means the infant car seat is locked.
- 5 - To remove infant car seat, press the two stroller release buttons (1) while lifting infant car seat up. (2)
- 6 - To remove post adapters, pull the two stroller release buttons while lifting the adapters up.

If you have any problems using the infant car seat, please refer to the infant car seat instruction manual.

Remove infant car seat before folding.



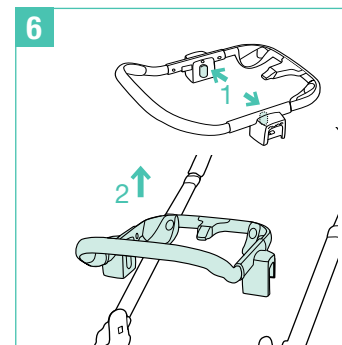
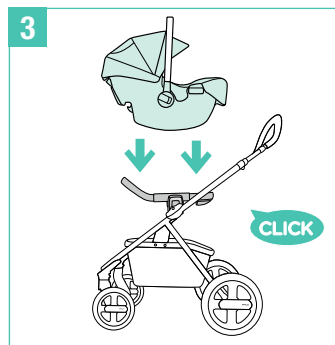
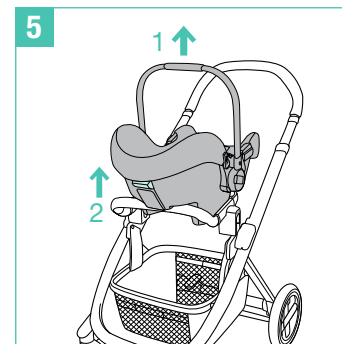
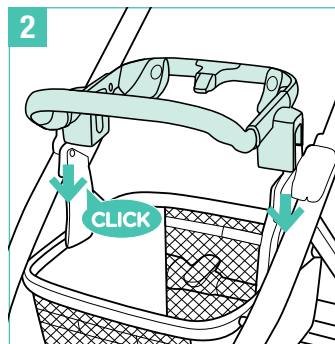
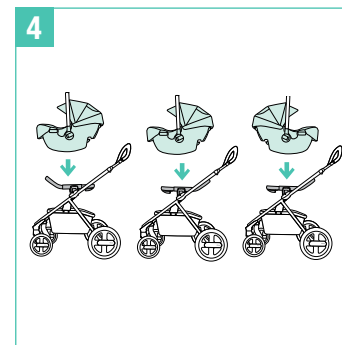
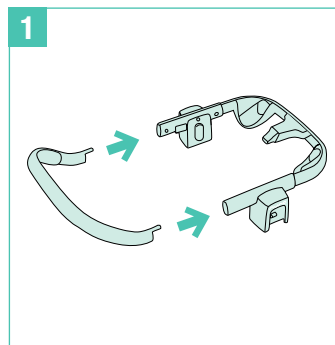
IVVI Infant Car Seat Ring Adapter*

*car seat not included

- 1 - Slide the two pieces of the ring adapter together until you hear a click. Pull outwards on either end to ensure the attachment is secure.
- 2 - To attach ring adapter, place adapter onto seat mounts as shown. A “click” sound means the adapter is locked.
- 3 - To attach car seat, place car seat onto ring adapter as shown. Press down on the car seat and listen for the “click” to ensure it is locked.
- ⚠ Pull up on the car seat to check that it is securely locked to the ring adapter and that the adapter is securely lock to the stroller.
- 4 - Do not attached the ring adapter or car seat as shown.
- 5 - To release the car seat, pull the car seat up (1) while squeezing the car seat release button (2) located on the back of the car seat.
- 6 - To remove ring adapter, press to two release buttons (1) and lift the adapter up (2).

If you have any problems related to using the stroller, refer to the stroller manufacturer instruction manual.

Remove infant car seat before folding.



IVVI Stroller Rain Cover

- 1 - To assemble the rain cover, place it over the stroller seat.

⚠ Always check ventilation, when the rain cover is on the product.

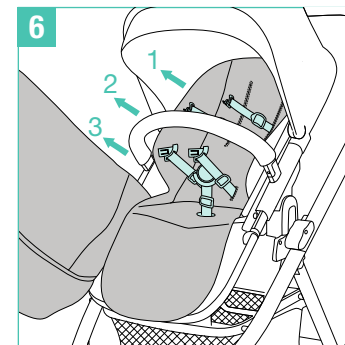
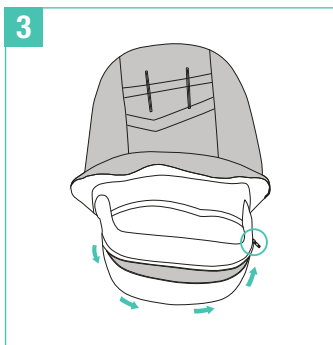
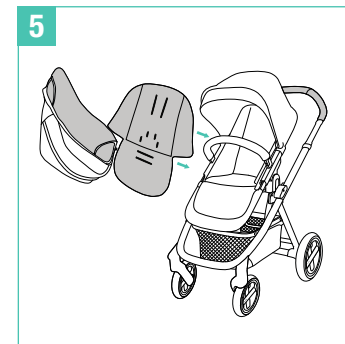
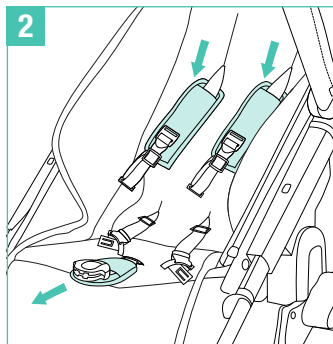
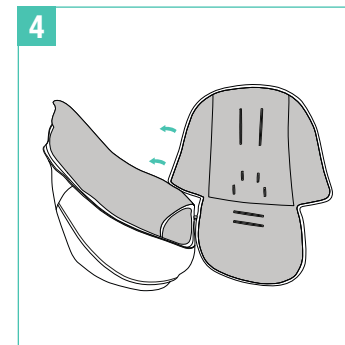
Always check that the rain cover has been cleaned and dried before folding.

Do not fold the stroller after assembling the rain cover.

Do not place your child into the stroller assembled with rain cover during hot weather.

IVVI Stroller Footmuff

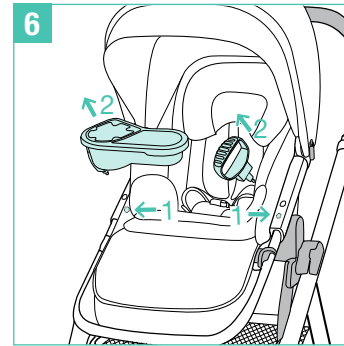
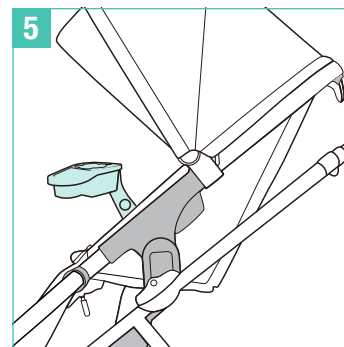
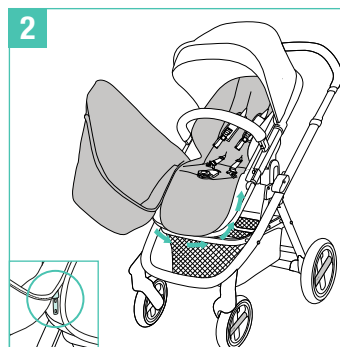
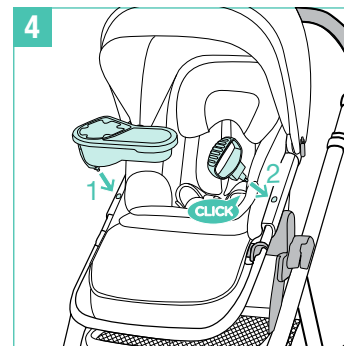
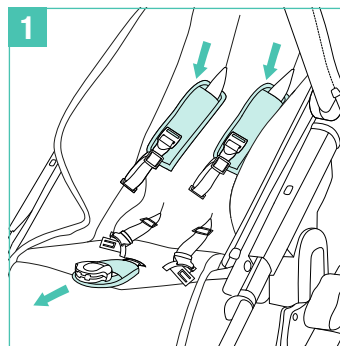
- 2 - For easier assembly of the footmuff, remove the shoulder harness pads and crotch pads from the stroller.
- 3 - Unzip front cover of the footmuff.
- 4 - Before placing footmuff onto stroller seat, open front cover.
- 5 - Place footmuff on the stroller seat.
- 6 - Pull shoulder harness webbing and buckles (1), hip harness webbing and buckles (2) and crotch webbing & buckle (3) through slots on footmuff.



- 1 - Reassemble shoulder harness pads and crotch covers on the stroller.
- 2 - Zip on the front cover of the footmuff.
- 3 - Fold down footmuff flap over the stroller armbar, securing with magnets.

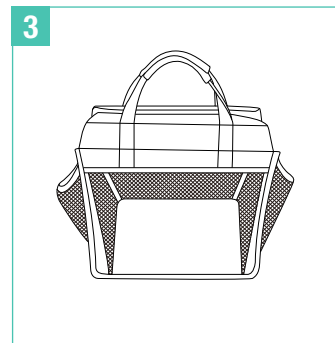
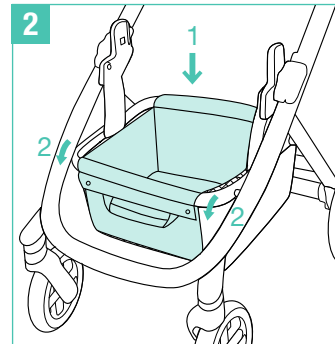
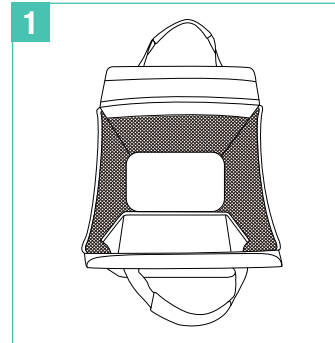
IVVI Stroller Child Tray & Toddler Handle

- 4 - To attach child tray, align with hole on stroller frame and push down until it “clicks”. (1)
To attach toddler handle, align with hole on stroller frame and push down until it “clicks”. (2)
- 5 - Child tray can pivot to desired location.
- 6 - To remove child tray or toddler handle, push release button (1) and pull up. (2)



IVVI Stroller Removeable Basket

- 1 - Open removeable basket.
- 2 - Place removeable basket into stroller basket (1) and secure around stroller basket with magnets (2).
- 3 - Removeable basket can be used as takeaway storage.



Cleaning and Maintenance

Your IVVI totl system is a valuable piece of equipment and deserves careful handling.

You can clean the frame, plastic parts, and fabric with a damp cloth, but do not use abrasives or bleach. Do not use silicon lubricants as they will attract dirt and grime. Do not store your stroller in a damp place.

For reasons of safety, only use original Nuna parts.

Refer to the care label attached to the soft goods for washing and drying instructions.

To ensure long-lasting use, wipe this product off with a soft, absorbent cloth after using it in rainy weather.

It is normal for fabric to color from sunlight and to show wear and tear after a long period of use, even when used normally.

Check regularly if everything functions properly. If any parts are torn, broken, or missing, stop using this product.

Clean the stroller wheels regularly with water and remove any dirt.

The child tray and toddler handle is not dishwasher safe. Wash with lukewarm water and a mild dish soap. Rinse, then drip dry or towel dry.

Warranty, Product Registration and Contact

Warranty

We have purposely designed our high-quality products so that they can grow with both your child and your family. Because we stand by our product, our gear is covered by a custom warranty per product, starting from the day it was purchased. Please have the proof of purchase, model number and serial number available when you contact us.

For warranty information please visit:

<http://www.nuna.eu/warranty>

Product Registration

All products include a serial label which lists the product model number and serial number. This label is located on the stroller frame and the bassinet. Before contacting customer service, please have these numbers available for reference.

To register your product please visit:

<https://www.nuna.eu/register-gear>

Contact

For replacement parts, service, or additional warranty questions, please contact our customer service departments.

In the USA:

infousa@nuna.eu

www.nuna.eu

1.855.NUNA.USA (1.855.686.2872)

United States:

Nuna Baby Essentials Inc.
70 Thousand Oaks Blvd.
Morgantown, PA 19543
1.855.NUNA.USA (1.855.686.2872)
nuna.eu

