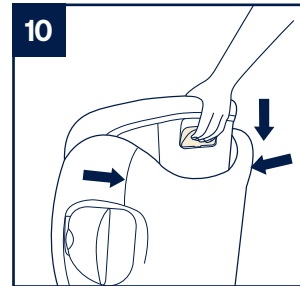
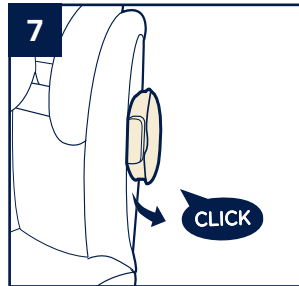
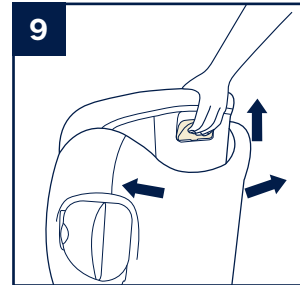
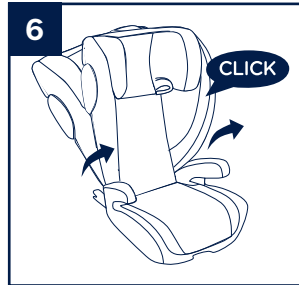
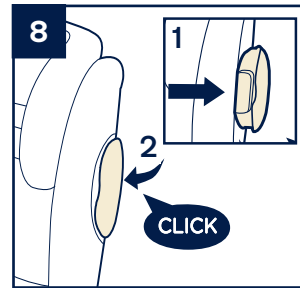
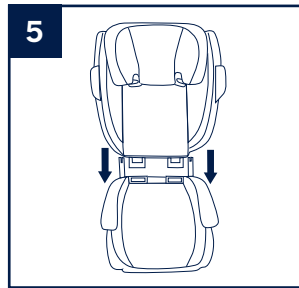
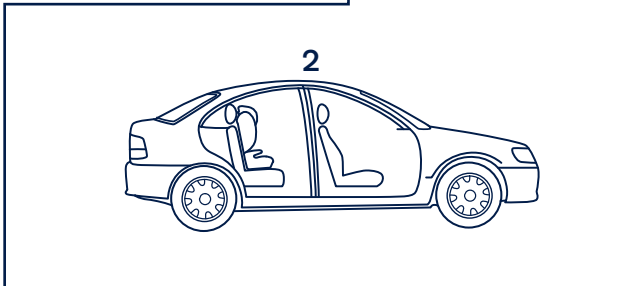
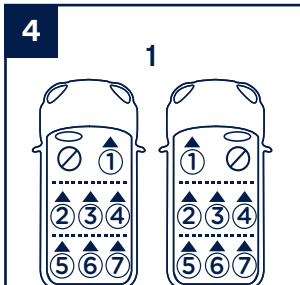
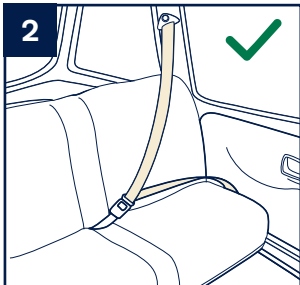
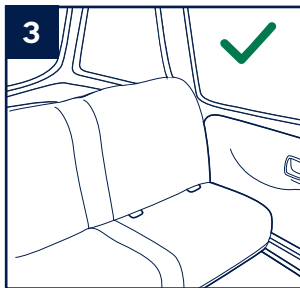
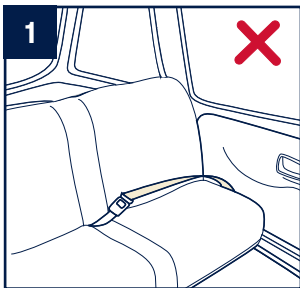
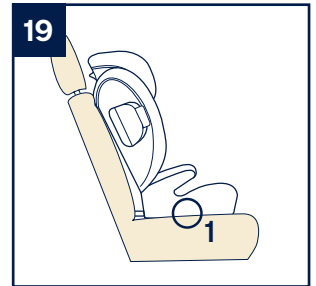
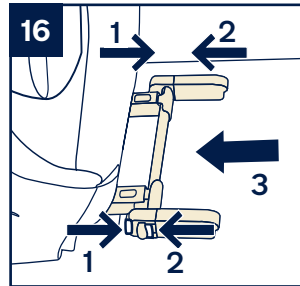
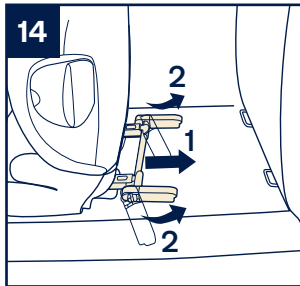
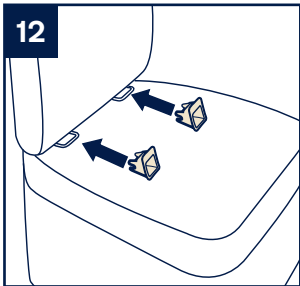
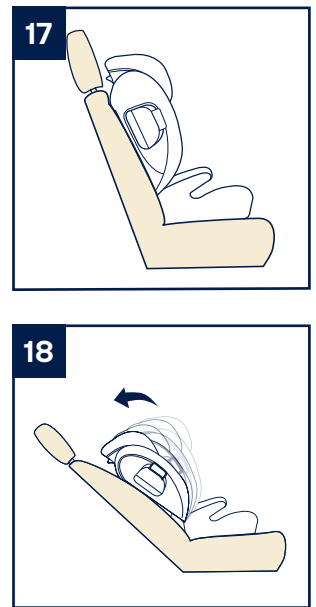
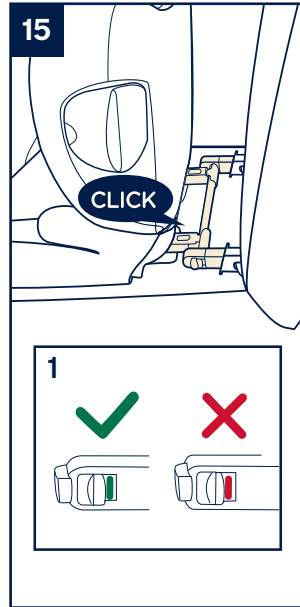
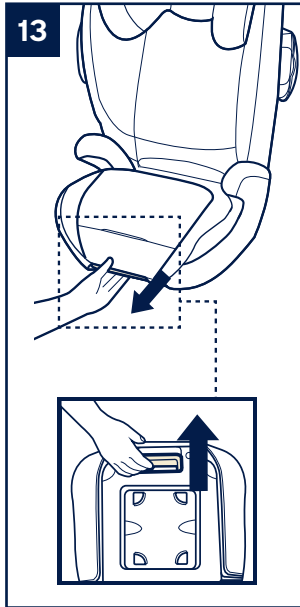
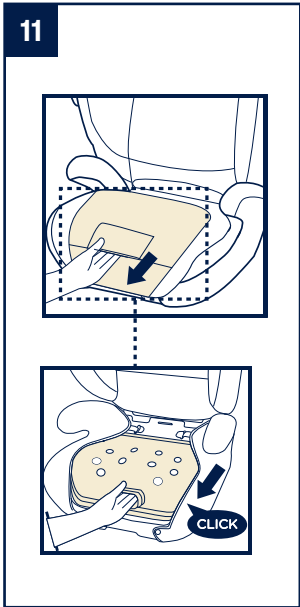
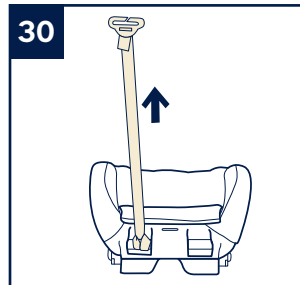
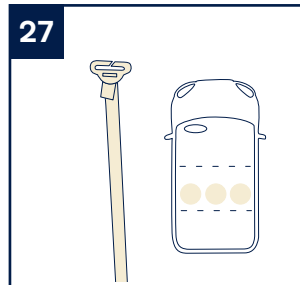
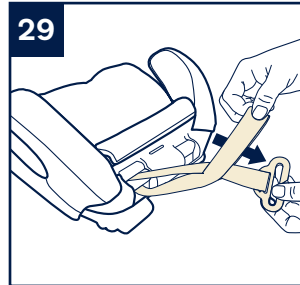
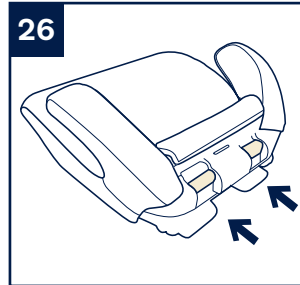
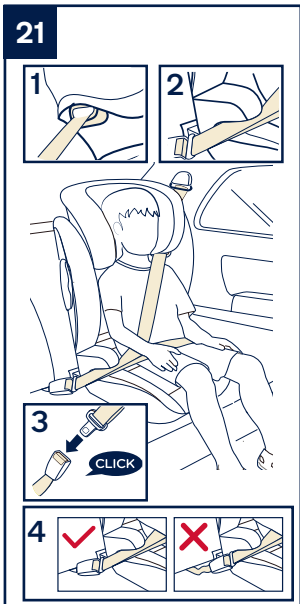
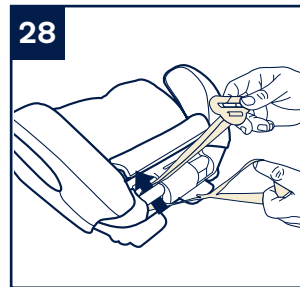
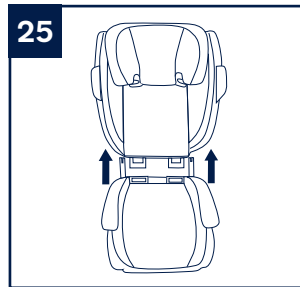
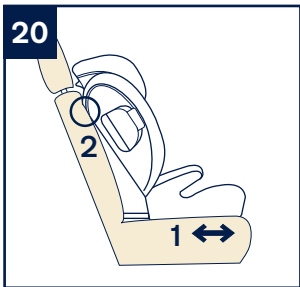


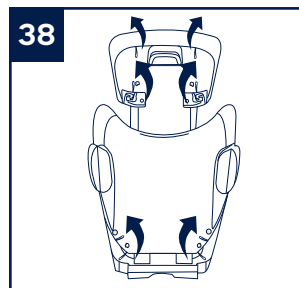
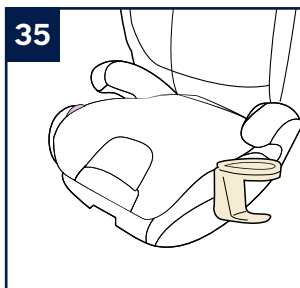
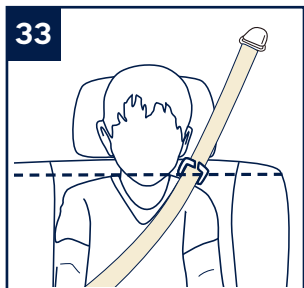
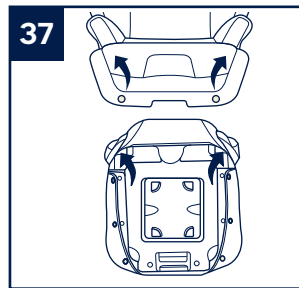
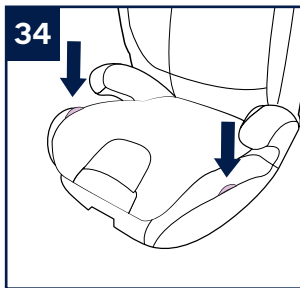
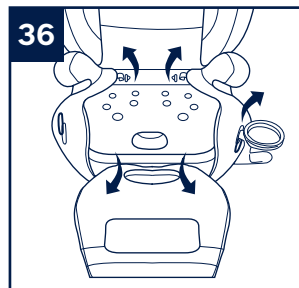
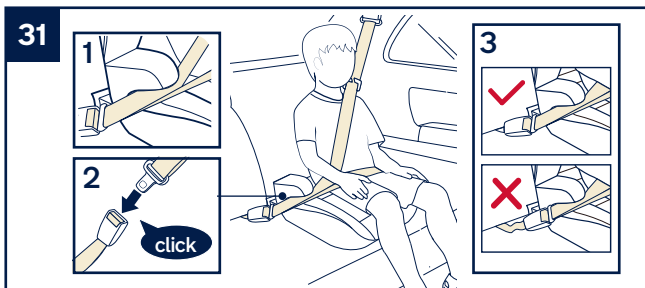
Designed
around your life

nuna®









IMPORTANT!
KEEP THESE
INSTRUCTIONS FOR
FUTURE REFERENCE:
READ CAREFULLY

Contents

Product Information	3
Warranty	
Child Usage Requirement	4
For Use with Base	5
Parts List	6
Warnings	7
Product Set Up	9
Product Use	9
Cleaning and Maintenance	13
Vehicle Fitting Information	14
简中	15

Product Information

Model Number: _____

Manufactured in (date): _____

Warranty

We have purposely designed our high-quality products so that they can grow with both your child and your family. Because we stand by our product, our gear is covered by a custom warranty per product, starting from the day it was purchased. Please have the proof of purchase, model number and manufactured in date available when you contact us.

For warranty information please visit:
www.nunababy.com/cn/warranty

Child Usage Requirements

This product is suitable for use with children who meet the following requirements:

Mass Group: 2, 3

Weight: 15 - 36 kg (approximately 3 - 12 years old).

This booster can be installed using a 3-point retractable adult seat belt, approved to UN ECE regulation 16 or other equivalent standards.

For Use with Base

For Installation with 3-point-belt

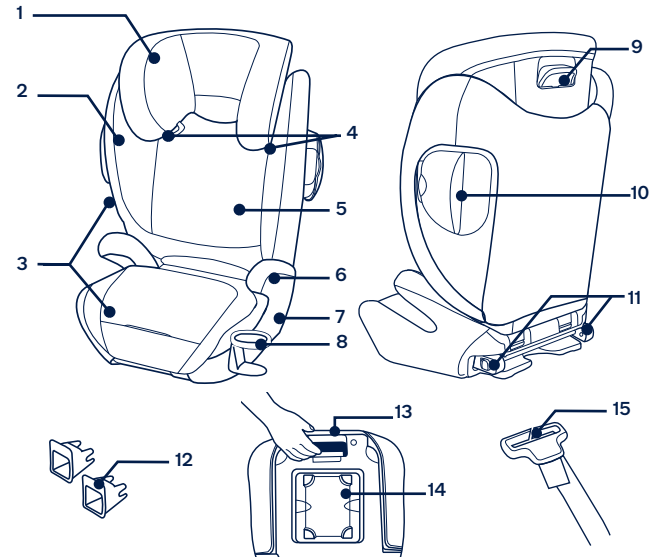
- 1 - This booster is a 'Universal' child restraint for general use in vehicles and it will fit most, but not all car seats.
- 2 - A correct fit is likely if the vehicle manufacturer has declared in the vehicle handbook that the vehicle is capable of accepting a 'Universal' child restraint for this age group.
- 3 - This booster has been classified as 'Universal' under more stringent conditions than those which applied to earlier designs which do not carry this notice. If in doubt, consult either the booster manufacturer or the retailer.

For Installation with ISOFIX anchor points and 3-point-belt

- 1 - This booster is a 'Semi-Universal' child restraint for or general use in vehicles fitted with ISOFIX anchor points.
- 2 - It will fit vehicles with positions approved as ISOFIX positions (as detailed in the vehicle handbook), depending on the category of the booster and of the fixture.
- 3 - If in doubt, consult either Nuna or vehicle manufacturer.

Parts List

- | | | | |
|---|----------------------|----|-----------------------------------|
| 1 | Head Support | 9 | Head Support Adjustment Lever |
| 2 | Lower Back Support | 10 | Side Impact Protection (SIP) Pod |
| 3 | Soft Goods | 11 | ISOFIX Latch |
| 4 | Shoulder Belt Guides | 12 | ISOFIX Guides |
| 5 | Seat Back | 13 | ISOFIX Release Lever (under seat) |
| 6 | Armrest | 14 | Instructional Manual (under seat) |
| 7 | Seat Bottom | 15 | Shoulder Belt Positioning Clip |
| 8 | Cupholder | | |



! WARNINGS

Failure to properly use this booster increases the risk of serious injury or death in a sharp turn, sudden stop or crash.

IMPORTANT - DO NOT USE FORWARD FACING BEFORE THE CHILD'S AGE EXCEEDS 2 years (Refer to instructions).

This booster is designed **ONLY** for child weighing 15–36 kg (approximately 3–12 years old).

Take care to locate and install the booster so that it is not liable to become trapped by a moveable seat or in a door of the vehicle.

Vehicle seat belt straps should be tight against child and not twisted.

Properly position the Vehicle Lap & Shoulder Belt on your child. A loose or improperly positioned Vehicle Lap & Shoulder Belt could cause the child to be ejected in a sudden stop, turn or crash and cause serious injury or death.

Make sure the Vehicle Lap & Shoulder Belt are not loose.

The Vehicle Shoulder Belt should rest on the child's shoulder and across the center of the chest.

The Vehicle Lap Belt must remain snug across the child's thighs.

Replace the booster after an accident of any kind. An accident can cause damage to the booster that you cannot see.

The booster can become very hot if left in the sun. Contact with these parts can burn your child's skin. Always touch the surface of any metal or plastic parts before putting your child in the booster.

According to accident statistics, children are safer when properly restrained in rear vehicle seating positions, rather than front seating positions. For a vehicle with a front passenger air bag, refer to your vehicle owner's manual as well as these instructions for a booster installation.

The soft goods should not be replaced with any besides the ones recommended by the manufacturer, because the soft goods constitute an integral part of the booster performance.

To avoid burns, never put hot liquids in your booster's cupholder.

DO NOT modify your booster or use any accessories or parts supplied by other manufacturers.

DO NOT use another manufacturer's soft goods with this booster. See your retailer for Nuna replacement parts only.

DO NOT use in any configuration not shown in the instructions.

DO NOT use this booster without the soft goods.

DO NOT use any load bearing contact points other than those described in the instructions and marked on the booster.

DO NOT face your booster toward the rear of the vehicle.

NEVER leave your child unattended.

NEVER give this booster to someone else without also giving them this manual.

NEVER use a second-hand child restraint or a booster whose history you do not know.

NEVER use a booster if it has damaged or missing parts. **DO NOT** use a cut, frayed or damaged vehicle seat belt.

NEVER leave a booster unsecured in your vehicle. An unsecured booster can be thrown around and may injure occupants in a sharp turn, sudden stop or crash. Remove it or make sure that it is secured in the vehicle.

NEVER leave luggage or other objects unsecured in a vehicle, they are liable to cause injuries in the event of a collision.

Product Set Up

Installation Concerns

- ! DO NOT install this booster on vehicle seats with Lap Belts only. **(1)**
- ! This booster is suitable for vehicle seats with a 3-point Retractor Safety Belt. **(2)** If your vehicle has ISOFIX Anchor Points, we strongly recommend that you connect the ISOFIX connector to the ISOFIX Anchor Points together. **(3)**
- ! DO NOT install this booster on vehicle seats that face sideways or rearward with respect to the moving direction of the vehicle.
- ! Please refer to your vehicle owner's manual for recommended or suggested installation positions. **(4)**-1
- ! This booster must be installed in the rear vehicle seat. **(4)**-2
- ! DO NOT install this on movable vehicle seats during installation.

Seat Assembly

- 1 - With the seat lying flat, attach the seat back to the booster seat bottom by hooking the seat back hooks over the seat bottom as shown. **(5)**
- 2 - Now rotate the seat back up until it clicks into position and the seat is fully upright as shown. **(6)**

Product Use

Side Impact Protection (SIP) Pods

- 1 - To open the SIP Pods pull out on the side tab **(7)**.
 - 2 - To close push button **(8)**-1 and push in **(8)**-2.
- ! SIP Pods should be deployed whenever the booster is installed in a vehicle. You may push in the inboard SIP pod if it interferes with an inboard passenger.

Height Adjustment for Head Support

- 1 - The Head Support height can be adjusted for best fit to your child and proper placement of the Vehicle Shoulder Belt.
- 2 - To adjust, squeeze the Head Support Adjustment Lever, then pull up **(9)** or push down **(10)** the Head Support until it locks into one of the 11 positions as shown.
 - ! Before adjusting the head support height have your child lean forward slightly.
 - ! As the Head Support is adjusted up, the sides of the seat automatically move outward to provide more shoulder room.

Seat Adjustment for Seat Bottom

The seat bottom depth can be adjusted for added comfort for the child. Three positions are provided for best fit.

- 1 - Reach under the cover as shown to adjust the seating surface in or out. **(11)**
- 2 - Slide the seating surface in or out as needed for additional thigh support. **(11)**

Use of ISOFIX Connectors

If vehicle is equipped with ISOFIX, the vehicle lower anchor points may be visible at the vehicle seat crease. See your vehicle owner's manual for exact locations, anchor identification, and requirements for use.

- 1 - Fit the ISOFIX guides with the ISOFIX anchor points **(12)**. The ISOFIX guides can protect the surface of the vehicle seat from being torn. They can also guide the ISOFIX connectors.
- 2 - Press the releasing button **(13)**, then pull the ISOFIX connectors out and rotate them by 180 degrees until they are pointing in the direction of the ISOFIX guides. **(14)**
- 3 - Line up the ISOFIX connectors with the ISOFIX guides, and then click both ISOFIX connectors into the ISOFIX anchor points. **(15)**
 - ! Make sure that both ISOFIX connectors are securely attached to their ISOFIX anchor points. The colors of the indicators on both ISOFIX connectors should be completely green. **(15)**-1

- ! Check to make sure the base is securely installed by pulling on both ISOFIX connectors.
- 4 - Press the releasing buttons on the ISOFIX connectors, and then pull the ISOFIX connectors out to remove the base. (16)
- 5 - Rotate the ISOFIX connectors by 180 degrees, and then press the releasing button to fold the ISOFIX connectors.
- 6 - The back of the booster MUST fit tight against the vehicle seat back as shown. (17)
 - ! The front of booster MUST NOT hang over front of vehicle seat.
 - ! Do not use with seat back beyond position 2. (18)
 - ! Connect booster to vehicle ISOFIX anchor points (See Use of ISOFIX Connectors). Ensure bottom of booster is in full contact with vehicle seat. (19)-1
 - ! Adjust the seat bottom by holding the ISOFIX Release Lever and moving the seat in or out to obtain desired angle as shown in (20)-1. Ensure the back of the booster is in contact with vehicle seat as shown in (20)-2.
- 7 - If you remove your vehicle headrest, be sure to stow it in a secure place; check your vehicle owner's manual.

Securing a Child in Booster

- ! Place the booster firmly against the back of a forward-facing vehicle seat equipped with a lap/shoulder belt.
- ! Have your child sit in the booster with their back flat against back of the booster seat.
- ! Position shoulder belt through the shoulder belt guide shown in (21)-1 (22)
- ! DO NOT position vehicle belt over top of the armrests. It must pass underneath the armrests. (21)-2

Route the vehicle safety belt through the belt path (21), and lock it into the buckle. (21)-3

- ! The booster can not be used if the vehicle safety belt buckle (female buckle end) is too long to anchor the booster securely. (21)-4
- ! The lap belt must be down low on pelvis.

- ! To ensure the correct head support height is obtained, the bottom of the headrest MUST be even with the top of child's shoulders as shown in (22).

- ! The Vehicle Shoulder Belt must route completely through the RED Shoulder Belt Guide and not fall off the child's shoulder. (23)

- ! If the belt lays across child neck, head or face, readjust head support height.

- ! Belt must not be twisted. Without back support

Adjust backrest to flat position, then one hand to detach backrest as (24)(25) to use base assembly independently.

- ! Please take good care of back support and head support.

- 1 - The Shoulder Belt Positioning Clip must be attached to the horizontal bar located on either side of the booster seat bottom. (26)
- 2 - The Shoulder Belt Positioning Clip can be installed on either side of the booster to achieve the best fit for your child in your vehicle. (27)
- 3 - Insert the loop end of the strap around the horizontal bar on the back of the booster. (28)
- 4 - Pass the Shoulder Belt Positioning Clip through the loop. (29)
- 5 - Pull up on the strap. (30)

Securing a Child in Booster

Route the Vehicle Belt through the RED lower belt path, located under the armrest (31)-1 and toward the vehicle buckle then secure the vehicle buckle and listen for a "click" (31)-2. The Vehicle Shoulder Belt should lie flat across the child's chest and the Vehicle Lap Belt should be snug across the child's thighs. The shoulder belt must lie across the child's shoulder.

- ! The booster can not be used if the vehicle safety belt buckle (female buckle end) is too long to anchor the booster securely. (31)-3

- ! It is important for the Vehicle Shoulder Belt to fall within the blue zone, shown in (32).

- ! Route the Vehicle Shoulder Belt through the Shoulder Belt Positioning Clip. Adjust the Shoulder Belt Positioning Clip by pulling down on the strap so the Shoulder Belt Positioning Clip is slightly above the child's shoulder as shown. (33)

Cupholder Assembly

Insert the Cupholder clip into the opening on either side of seat. **(34)** Make sure the Cupholder clip is fully inserted into both the fabric and plastic slot on booster. **(35)**

Soft Goods Disassembly

- 1 - Remove the Cupholder and pull out the seat bottom fabric by removing the 3 plastic attachments. **(36)**
- 2 - Open 8 snaps on seat bottom and remove soft goods. **(37)**
- 3 - On the main seat back cover, open the 2 snaps and unhook 4 elastic bands on the back side and remove. **(38)**
- 4 - On the Head Support, raise to highest position, then unhook 4 elastic bands and remove. **(38)**

To reassemble the soft goods simply reverse the steps above.

Cleaning and Maintenance

Wash the soft goods with cold water under 30°C.

DO NOT iron the soft goods.

DO NOT bleach or dry clean the soft goods.

DO NOT use undiluted detergents, gasoline or other organic solvents to wash the booster. It may cause damage to the product.

DO NOT twist the soft goods and inner padding to dry with great force. It may leave the soft goods and inner padding with wrinkles.

Please hang dry the soft goods and inner padding in the shade.

Please remove the booster from the vehicle seat if not in use for a long period of time. Put the booster in a cool, dry place and somewhere your child can not access it.

Vehicle Fitting Information

The booster with latch is classified for “Semi-Universal” child restraint system use. It is suitable for fixing into the seat positions of most cars. The figures on the diagram below correspond with the vehicle fitting positions listed in the following pages.

Seat positions in other cars may also be suitable to accept the booster. If in doubt, consult either the booster manufacturer or the distributor.

DO NOT install this booster on the front vehicle seats.

If your booster can be fitted, it is marked with •

If your booster cannot be fitted, it is marked with x

Electric or hybrid vehicles are marked with ⚡

If your vehicle is not listed in this manual or it is not marked with either a • or x then please refer to your vehicle’s handbook or contact the manufacturer for further information.



请妥善保存本说明书 以备不时之需!

使用产品前请仔细阅读本说明书，并妥善保存以供日后参照。不依照本说明书的指示操作，可能会影响到您宝宝的安全。

目录

产品资讯	17
保修条件	
儿童使用要求	19
安全须知与注意事项	20
产品组件及各部件名称	22
警告	23
安装注意事项	26
儿童安全座椅使用	27
维修与保养	32
汽车安装资讯	33

产品资讯

产品名称：_____

生产日期：_____

保修条件

保修始于产品购买日。我们提供维修服务，但不提供产品退换，即使某些零件曾经过维修，也不会因此延长保修期限。Nuna有权利针对产品改善设计，是此先前制造的产品则无更换之义务。

相关保修资讯，详见官网：

www.nunababy.com/cn/warranty

产品名称	车用儿童保护装置
产品型号	CS070
适用范围	15-36公斤(约3 -12岁)的宝宝
适用群组	II组、III组
执行标准	GB 27887-2011 《机动车儿童乘员用约束系统》
主要材质	塑胶、五金、布
产地	中国

儿童使用要求

配合靠背头靠使用

您的孩子必须完全符合以下要求，才可以使用本产品：

年 龄: 约3-12岁
体 重: 15-36公斤
身 高: 96-150公分

不配合靠背头靠使用

您的孩子必须完全符合以下要求，才可以使用本产品：

年 龄: 约4-12岁
体 重: 15-36公斤
身 高: 101-150公分

安全须知与注意事项

使用本产品前，请仔细阅读说明书。如有疑问，请咨询儿童约束系统制造商和进口商。

本儿童安全座椅适用符合GB 14166或ECE R16其他等效标准的三点式安全带(不含两点式安全带)的汽车座椅，因本儿童安全座椅是依安全标准GB 27887-2011去做测试和认证的。

用三点式安全带安装

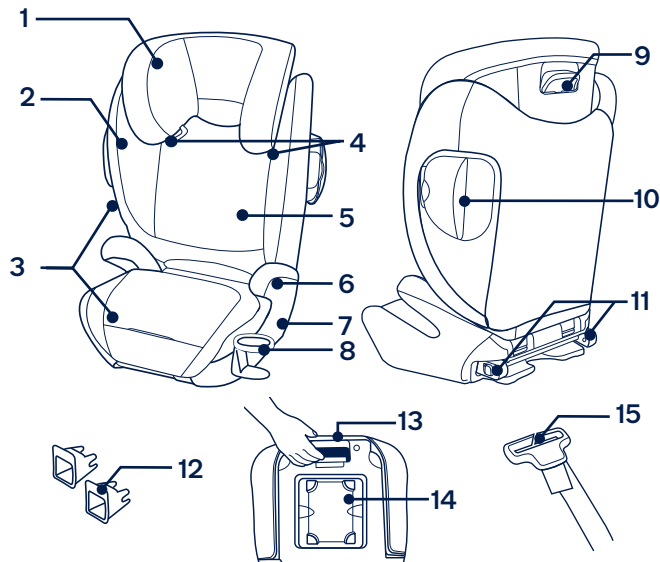
- 1- 这是“通用类”儿童约束系统，符合安全标准GB 27887-2011。作为通用儿童约束系统，适合大多数，而不是全部的汽车座椅。
- 2- 如果汽车制造商在使用手册中注明可以让适用此年龄段的“通用类”儿童约束系统配合的话，那么更容易达到正确的匹配。
- 3- 此儿童约束系统归类为“通用类”，比其他无标示此注意事项的儿童约束系统可适用于较多车辆。

用三点式安全带和连接器安装

- 1- 这是“半通用类”儿童约束系统，符合安全标准 GB 27887-2011，可安装在有3点式安全带和有 ISOFIX 固定装置的汽车座椅上。
- 2- 其他车辆型式亦有可能是用此儿童保护装置，如有疑问，请咨询儿童约束系统制造商或车辆使用手册。
- 3- 22-36公斤不配合背靠头靠使用时，请勿使用连接器安装。

产品组件及各部件名称

- | | |
|---------|--------------|
| 1 头靠 | 9 头靠调整拉杆 |
| 2 背靠侧翼 | 10 侧向保护塑胶 |
| 3 座布 | 11 连接器 |
| 4 肩带导向器 | 12 连接器导向器 |
| 5 背靠 | 13 连接器拉杆 |
| 6 扶手 | 14 说明书(底座下方) |
| 7 底座 | 15 肩带固定夹 |
| 8 置物杯 | |



警告

儿童安全座椅适用于体重15-36kg（大约3岁-12岁的儿童）。

儿童约束系统的每条与车辆连接的织带应系紧，约束儿童的织带应根据儿童的身体进行调整。织带不得扭曲。

将儿童放在本产品后，必须正确的扣合及使用儿童安全座椅安全带，并确保腰部织带能有效束缚骨盆部位。

本儿童约束系统若于意外中遭受剧烈撞击后，不可继续使用，应立即更换儿童安全座椅。意外可能导致儿童约束系统产生潜在危险。

请勿擅自改造本儿童安全座椅，或使用其他厂商生产的零件来配合本儿童安全座椅使用，会对宝宝造成危险。没有认证许可的产品和经过改装的产品是危险的，并且附近没有制造商提供的安装说明也是很危险的。

请让座椅远离日光，以免产品温度过高对儿童的皮肤造成伤害。

不要将儿童在无人照看的情况下放置在儿童安全座椅内。

在碰撞事故中易造成伤害的行李和物品应被妥善安放。

当本儿童安全座椅没有座布时，请勿使用。

请勿使用非本制造商推荐的座布，否则会影响儿童安全座椅的总体性能。

不得使用除说明文件描述的和儿童约束系统上标识的任何其他受力点。必须小心定位和安装儿童安全座椅，以免被活动式座椅或车门卡住。

不正确使用或安装本儿童安全座椅，当紧急刹车和急转弯时，可能会导致严重受伤或死亡的危险。

请勿使用其它厂商生产的儿童安全座椅座垫。请与销售商联系只可使用NUNA配件更换零件。

有关零件更换或维修问题，请向销售商咨询。

请勿使用说明书中未有显示的任何配件。

根据事故统计，儿童安全座椅正确固定在汽车后座比固定在汽车前座会更安全一些，对于前座有安全气囊的汽车，请参考汽车使用说明书来安装本儿童安全座椅。

请勿将未使用汽车安全带固定住的儿童安全座椅留在车内，以免紧急刹车时，伤害到其他乘客。若不经常使用儿童安全座椅时，请将其搬离汽车座椅。

请勿使用已经损坏或缺失零件的儿童安全座椅。请勿使用切割过的、磨损的或损坏的车辆安全座椅。

请勿把本儿童安全座椅当作平常的椅子使用，会容易翻倒造成伤害。

不可使用绳子等其他物件代替汽车安全带，以免儿童被意外勒住。

请勿让您的宝宝穿着过大的衣物，所穿的衣物必须能让儿童安全座椅的安全带适当而安全地扣在宝宝两腿之间。请勿在未阅读或了解本儿童安全座椅说明书及汽车说明书之前，使用或安装本儿童安全座椅。因为可能会导致严重受伤或死亡的危险。

将本儿童安全座椅送给其他人使用时，请将说明书一并送给他。

请勿使用二手儿童安全座椅或来历不明的儿童安全座椅，因为它们可能存在危害乘坐儿童安全的潜在危险。

使用本产品前，请取掉PE袋和包装材料，并放到婴儿和儿童触摸不到的地方。

请勿搬运乘坐着儿童的儿童安全座椅。

请勿后向使用儿童安全座椅。

避免烫伤儿童，请勿将热饮放入置物杯内。

安装注意事项

安装资讯

- ! 请勿将此汽车安全座椅安装在二点式安全带的汽车座椅上(1)
- ! 此汽车安全座椅适合安装在设置有三点式安全带的汽车座椅上(2)，如果有ISOFIX连接系统，强烈建议安装在三点式安全带和ISOFIX连接系统上(3)
- ! 请勿将此汽车安全座椅安装在相对于汽车的行驶方向横向。
- ! 关于汽车安全座椅安装位置请参考汽车说明的相关说明(4)-1
- ! 请将此产品安装在后座上，防止意外发生时造成乘坐儿童伤亡(4)-2
- ! 请勿将此汽车安全座椅安装于可移动的汽车座椅上。

组装底座

- 1- 当背靠安装到底座上时先用力把背靠下压，背靠上的U型钩与底座上横杆会相互卡合，安装如图(5)所示。
- 2- 当背靠正确安装在底座上时，请依图向前推起背靠(6)

儿童安全座椅使用

打开侧向保护塑胶

1- 打开侧向保护塑胶(7)

2- 按压按钮(8)-1即可关闭侧向保护塑胶(8)-2

! 必需打开侧向保护塑胶才能更好的保护儿童的安全。如果汽车座椅乘车空间不足,可将靠近内侧的侧向保护塑胶关闭。

头靠高度调整

1- 请根据儿童的身高,将头靠调整到合适高度。头靠的底部必须与儿童肩膀最高点平行。

2- 按压头靠调整拉杆,同时向上(9)或向下(10)滑动头靠到合适高度,头靠高度共有11个段位。

! 在头靠调整高度之前,请让乘坐的儿童稍微向前倾。

! 当头靠向上调整时,背靠侧翼会逐步打开,可增加使用空间。

座椅段位调整

座椅共有3个段位可供调节,符合不同儿童的身形。

1- 按压座布下方的按钮,同时拉或推可以调整座椅的位置(11)

2- 调整座椅的位置,更方便儿童大腿的支撑(11)

使用连接器安装底座

如果在汽车座椅背靠下方有ISOFIX接口,可以使用连接器去连接。对它的位置和使用要求可以参考汽车使用说明。

1- 如需要请将连接器导向器固定到ISOFIX固定点上(12),连接器导向器既可防止汽车座椅表面被刮破,又可为连接器安装导向。

2- 按压底座下方的连接器释锁按钮(13),将连接器拉出,并旋转180度指向ISOFIX固定点上(14)

3- 将连接器固定在ISOFIX固定点上(15)

! 请保证连接器两端已正确固定在ISOFIX固定点上。当正确固定时,连接器上的指示器应显示绿色(15)-1

! 同时往外拉两边的连接器,以检查连接器已正确固定。

4- 移除底座时,按压连接器上的第二道安全锁和释锁按钮,然后将底座往外拉即可(16)

5- 将连接器旋转180度收纳在底座下方。

6- 儿童安全座椅背靠必须紧贴汽车座椅。请根据需要调整或移动汽车座椅头靠,避免与儿童安全座椅有干涉(17)

! 儿童安全座椅不能超过汽车座位的前方。

! 请勿将背靠调整到儿童安全座椅的两个段位之外的位置使用本儿童安全座椅(18)

- ! 将汽车座椅调整为垂直状况。将连接器固定在 ISOFIX 固定点上(参考“使用连接器安装底座”), 儿童安全座椅底部必须紧贴汽车座椅(19)-1
 - ! 通过操作儿童安全座椅调整连接器拉杆来调整底座位置, 将底座向内或向外移动来达到需要的背靠角度如图(20)-1。确保儿童安全座椅背靠与汽车座椅接触如图(20)-2。
- 7- 请按需要调整或移动汽车座椅头靠, 避免与儿童安全座椅有干涉。

儿童乘坐

- ! 儿童安全座椅必须正确安装, 肩带必须要穿过红色肩带导向器。
- ! 正确调整头靠位置, 当您的孩子坐在儿童安全座椅时, 让他的背部平贴在儿童安全座椅背上。
- ! 肩带必须要穿过红色肩带导向器并不从孩子肩膀上滑落(21)-1(22)
- ! 安全带请勿从扶手上方通过。安全带必须通过扶手下方(21)-2

安全带安装如图(21)所示, 扣合安全带插扣座(21)-3

- ! 汽车安全带母扣段若太长, 接触到或超过儿童约束系统受力点位置, 则不能使用。如用户对于这个点有疑问的话, 建议与儿童约束系统制造商联系(21)-4
- ! 腰带穿过孩子大腿上方, 必须固定在孩子骨盆较低的地方。

- ! 为保证正确的头靠高度, 头靠的底部必须与儿童肩膀的最高点水平或略高(22)
- ! 肩带必须要穿过红色肩带导向器并不从孩子肩膀上滑落(23)
- ! 如果安全带横跨了儿童的脖子、头部或面孔, 须重新调整头靠高度。
- ! 请确保汽车安全带没有松弛或扭曲。

不配合背靠头靠使用

平躺背靠, 用手按住底座拆开背靠(24)(25), 底座可以单独使用。

- ! 请妥善保管背靠和头靠。
- 1- 肩带固定夹的织带末端必须固定在底座的固定杆上(26)
 - 2- 请正确选择肩带固定夹的织带末端穿过底座固定杆的位置。保证该处是肩带跨过孩子肩膀的最远位置(27)
 - 3- 肩带固定夹的织带末端穿过底座的固定杆(28)
 - 4- 肩带固定夹的夹器穿过织带(29)
 - 5- 向上拉紧织带(30)

儿童乘坐

安全带必须通过肩带固定夹和扶手下方**(31)-1**，并扣合安全带插扣座**(31)-2**。肩带必须通过肩带固定夹并不从孩子肩膀上滑落。腰带穿过孩子大腿上方，必须固定在孩子骨盆较低的地方。

- ! 汽车安全带母扣段若太长，接触到或超过儿童约束系统受力点位置，则不能使用。如用户对于这个点有疑问的话，建议与儿童约束系统制造商联系**(31)-3**
- ! 肩带必须穿过蓝色区域横跨儿童肩膀，肩带必须穿过肩带固定夹**(32)**
- ! 请确认肩带穿过肩带固定夹的位置，通过调整肩带固定夹的织带长短，保证肩带固定夹略微超过儿童肩膀上方**(33)**

组装置物杯

向下将置物杯装入底座两侧**(34)**。保证置物杯固定点卡入底座座布和塑胶卡槽内**(35)**

拆卸座布

- 1- 移除置物杯并拆卸底座座布内的3个固定片**(36)**
- 2- 打开8个纽扣移除底座座布**(37)**
- 3- 打开背靠的2个纽扣和4根松紧带**(38)**
- 4- 将头靠调到最高档位，移除4根松紧带**(38)**

依相反步骤即可重新组装座布。

维修与保养

请以30度以下水温清洗。

请勿使用熨斗熨烫。

请勿使用漂白剂及干洗。

请勿使用未经稀释的中性清洁剂、汽油或其他有机溶剂清洗儿童约束系统，否则可能对儿童约束系统造成损坏。

使用温和的洗涤剂，水和柔软的布清洗儿童安全座椅。

请勿大力扭干，过分大力扭干可能留下褶皱。

请于阴凉处铺平晾干。

当长时间不使用本儿童安全座椅时，请将本儿童安全座椅从汽车座椅上拆除，并存放于阴凉处及宝宝不易接触的地方。

汽车安装资讯

本儿童安全座椅与连接器一起构成“半通用型”，适合大多数，而不是全部的汽车座椅。下图中的数字与“汽车安装资讯”内的数字相对应。其他汽车内的座椅位置也可能可以安装本儿童约束系统，以下车型为车款安装适配性资料。如有疑问，请咨询儿童约束系统制造商或进口商。

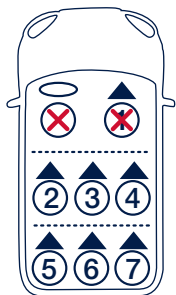
请勿将本儿童安全座椅安装在汽车前座上。

●表示汽车座椅可安装本儿童约束系统。

x表示汽车座椅不可安装本儿童约束系统。

⚡表示用电或其它混合驱动的车辆。

如果您的汽车品牌未被列入本说明书或未用“●”或“x”进行标示，请查阅您的汽车手册或联络儿童约束系统制造商，以进一步了解相关资讯。



NUNA International B.V. Nuna及所有相关徽标皆为商标

Installation with Latch System

①②③④⑤⑥⑦

Alfa Romeo

Giulietta (2010 >) x ● x ● - - -
Mito (2009 >) x ● x ● - - -

Audi

A1 (2011 >) x ● x ● - - -
A1 Sportback (2012 >) x ● x ● - - -
A3 Hatchback (2012 >) x ● x ● - - -
A3 (1996 - 2003) x ● x ● - - -
A3 S3 (2012 >) x ● x ● - - -
⚡ A3 e-Tron Sportback (2015 >) x ● x ● - - -
A3 Saloon (2014 >) x ● x ● - - -
A4 Allroad (2009 >) x ● x ● - - -
A4 Avant (2008 >) x ● x ● - - -
A4 Saloon (2008 >) x ● x ● - - -
A4 S4 (2009 >) x ● x ● - - -
A4 S4 Avant (2009 >) x ● x ● - - -
A5 (2007 >) x ● x ● - - -
A5 Sportback (2009 >) x ● x ● - - -
A5 S5 Sportback (2007 >) x ● x ● - - -
A6 (2011 >) x ● x ● - - -
A6 Allroad (2011 >) x ● x ● - - -
A6 Avant (2011 >) x ● x ● - - -
A6 S6 (2011 >) x ● x ● - - -
A7 Sportback (2011 >) x ● x ● - - -
A8 (2011 >) x ● x ● - - -
A8 S8 (2011 >) x ● x ● - - -
Q3 (2013 >) x ● x ● - - -
Q5 (2009 >) x ● x ● - - -
Q7 (2006 >) x ● x ● - - -
TT Coupe (2006 >) x ● x ● - - -

Bentley

Continental GT (2003 - 2011) x ● x ● - - -
Continental Flying Spur (2005 - 2012) x ● x ● - - -
Continental GTC (2005 - 2012) x ● x ● - - -
Mulsanne (2010 >) x ● x ● - - -

BMW

1 Series Convertible (2008 >) x ● x ● - - -
1 Series Coupe (2008 >) x ● x ● - - -
1 Series F20 (2011 >) x ● x ● - - -
2 Series Active Tourer x ● x ● - - -
2 Series Coupe x ● x ● - - -

		①	②	③	④	⑤	⑥	⑦
	3 Series Coupe (2007 >)	X	X
	3 Series F30 (2012 >)	X	X
	5 Series Saloon (2003 - 2010)	X	X
	5 Series Touring (2003 - 2010)	X	X
	5 Series Touring (2011 >)	X	X
	5 Series Saloon (2011 >)	X	X
	5 Series (2011 >)	X	X
	6 Series Coupe (2011 >)	X	X
	6 Series Convertible (2011 >)	X	X
	6 Series Gran Coupe (2011 >)	X	X
	7 Series (2010 >)	X	X
	i3 (2014 >)	X	X
	X1 (2010 >)	X	X
	X3 F25 (2011 >)	X	X
	X4 (2014 >)	X	X
	X5 (2007 >)	X
	X5 (2015)	X
	X6 (2008 >)	X	X
	X6 (2015)	X	X
	3-GT (2013 >)	X	X
	5-GT (2010 >)	X	X
Cadillac								
	BLS Saloon (2006 - 2011)	X	.	X
Chevrolet								
	Aveo (2012 >)	X	X
	Captiva (2007 >)	X	X
	Cruze (2009 >)	X	X
	Spark (2012 >)	X	X
	Volt (2011 >)	X	X
	Orlando (2011 >)	X	X
	Traxx (2013 >)	X	X
Chrysler								
	Grand Voyager (2008 >)	X	.	X
	300 C (2012 >)	X	.	X
	Delta (2011 >)	X	.	X
	Ypsilon (2011 >)	X	.	X
Citroen								
	Berlingo Multispace (2007 >)	X	.	X
	C1 (2006 >)	X	.	X
	C1 (2015)	X	.	X
	C3 5 Door (2009 >)	X	.	X
	C3 Picasso (2009 >)	X	.	X
	C4 (2010 >)	X	.	X

		①	②	③	④	⑤	⑥	⑦
	C4 Picasso (2007 >)	X
	C4 Picasso (2014 >)	X
	C5 Saloon (2008 >)	X	.	X
	C5 Tourer (2008 >)	X	.	X
	C-Cactus (2015 >)	X	.	X
	DS3 (2011 >)	X	.	X
	DS4 (2011 >)	X	.	X
	DS5 (2013 >)	X	.	X
Dacia								
	Duster (2012 >)	X	.	X
	Sandero (2013 >)	X	.	X
Fiat								
	500 (2008 >)	X	.	X
	500 C (2009 >)	X	.	X
	Abarth 500 (2009 >)	X	.	X
	Bravo (2007 >)	X	.	X
	500L (2013 >)	X	.	X
	Panda (2012 >)	X	.	X
	Grande Punto (2006 >)	X	.	X
	Abarth Grande Punto (2008 - 2011)	X	.	X
Ford								
	B Max (2012 >)	X	.	X
	C Max (2003 - 2012)	X
	Fiesta (2004 - 2008)	X	.	X
	Fiesta (2008 >)	X	.	X
	Focus (2010 >)	X	.	X
	⚡ Focus (2015 >)	X	.	X
	Focus CMax (2003 - 2010)	X
	Galaxy (2006 >)	X
	KA (2009 >)	X	.	X
	Kuga (2013 >)	X	.	X
	Mondeo Estate (2007 >)	X	.	X
	Mondeo Hatchback (2007 >)	X	.	X
	Mondeo Saloon (2007 >)	X	.	X
	Mondeo (2014 >)	X	.	X
	S Max (2006 >)	X
	CMax (2013 >)	X
Honda								
	Accord Saloon (2008 >)	X	.	X
	Accord Tourer (2008 >)	X	.	X
	Civic (2012 >)	X	.	X
	Civic (2006 - 2011)	X	.	X

	①	②	③	④	⑤	⑥	⑦
Civic Hybrid Saloon (2006 - 2010)	X	X
Civic Type R (2007 - 2010)	X	X	X
Civic Tourer (2014 >)	X	X	X
CRV (2007 - 2013)	X	X	X
CRV (2012 >)	X
Elysion (2012 >)	X	X	X
FRV (2006 - 2011)	X	X	X
Insight (2009 >)	X	X	X
Jazz (2008 >)	X	X	X
Odyssey (2010 >)	X	X	X

Hyundai

i10 Hatchback (2008 >)	X	.	X
i20 Hatchback (2009 >)	X	.	X
i30 (2012 >)	X	.	X
i40 (2011 >)	X	.	X
iX20 (2011 >)	X	.	X
iX35 (2010 >)	X	.	X
SantaFe (2012 >)	X	.	X
Tucson (2010 >)	X	.	X
Veloster (2012 >)	X	.	X

Infiniti

EX (2009 >)	X	.	X
FX (2009 >)	X	.	X
G Coupe (2009 >)	X	X	X	X	.	.	.
G Saloon (2009 >)	X	.	X
M (2010 >)	X	.	X

Jaguar

X-Type (2001 - 2010)	X	.	X
X-Type Estate (2004 - 2010)	X	.	X
XF (2008 >)	X	.	X
XF R (2009 >)	X	.	X
XF Sportbrake (2013 >)	X	.	X
XJ (2010 >)	X	.	X
XK (2006 >)	X	.	X
XK Convertible (2006 >)	X	.	X
XK R (2006 >)	X	.	X

Jeep

Grand Cherokee (2011 >)	X	.	X
Compass (2011 >)	X	.	X
Cherokee (2014 >)	X	.	X

Kia

	①	②	③	④	⑤	⑥	⑦
Carens (2013 >)	X
Ceed Hatchback (2012 >)	X	.	X
Optima (2011 >)	X	.	X
Picanto (2008 >)	X	.	X
Rio (2012 >)	X	.	X
Sorento (2012 >)	X	.	X
Sorento (2015)	X	.	X
Soul (2009 >)	X	.	X
⚡ Soul (2015 >)	X	.	X
Sportage (2011 >)	X	.	X
Venga (2010 >)	X	.	X

Land Rover

Discovery Sport (2015 >)	X	.	X
Discovery 4 (2009 >)	X	.	X
Freelander 2 (2006 >)	X	.	X
Range Rover (2013 >)	X	.	X
Range Rover (2002 - 2012)	X	.	X
Range Rover Sport (2005 - 2012)	X	.	X
Range Rover Sport (2013 >)	X	.	X
Range Rover Evoque (2011 >)	X	.	X

Lancia

Thema (2012 >)	X	.	X
Voyager (2010 >)	X	.	X
Ypsilon (2012 >)	X	.	X

Lexus

CT (2011 >)	X	.	X
⚡ GS (2013 >)	X	.	X
IS Saloon (2005 - 2012)	X	.	X
RX (2010 >)	X	.	X

Mazda

CX-5 (2011 >)	X	.	X
CX-7 (2007 - 2011)	X	.	X
2 (2007 >)	X	.	X
3 Hatchback (2009 >)	X	.	X
3 Saloon (2009 >)	X	.	X
3 Hatchback (2014 >)	X	.	X
5 (2005 - 2010)	X	.	X
6 Estate (2008 - 2012)	X	.	X
6 Hatchback (2007 - 2012)	X	.	X
6 Saloon (2007 - 2009)	X	.	X
6 Saloon (2013 >)	X	.	X
6 Estate (2012 >)	X	.	X

	①	②	③	④	⑤	⑥	⑦
Mercedes-Benz							
A Class (2005 - 2012)	x	x
A Class (2013 >)	x	x
B Class (2012 >)	x
⚡ B Class (2015 >)	x
C Class (2008 >)	x	x
C Class Estate (2008 >)	x	x
C Class Coupe (2011 >)	x	x
CLA (2013 >)	x	x
CLS Shootingbrake (2012 >)	x	x
CLS Coupe (2011 >)	x	x
E Class Saloon (2009 - 2012)	x	x
E Class Coupe (2009 >)	x	x
E Class Estate (2013)	x	x
E Class Saloon (2013 >)	x	x
GL Class (2006 - 2012)	x
M/ML Class (2005 - 2012)	x
R Class (2006 - 2012)	x
S Class (2006 - 2013)	x	x
SL Class (2012 >)	x
SLK (2011 >)	x
V Class (2003 - 2014)	x
V Class (2015 >)	x
Mini							
Mini (Cooper) Hatchback (2006 - 2013)	x	.	x
Mini (Cooper) Hatchback (2014 >)	x	.	x
Mini Coupe (2009 >)	x
Mini Countryman (2010 >)	x	.	x
Mini Paceman (2013 >)	x	.	x
Mini 5dr (2015 >)	x	.	x
Mitsubishi							
ASX (2010 >)	x	.	x
Colt (2007 - 2013)	x	.	x
Lancer (2008 - 2011)	x	.	x
Lancer Sportback (2008 - 2011)	x	.	x
Lancer Ralliart (2009 - 2011)	x	.	x
Outlander (2007 - 2013)	x	.	x
Outlander (2013 >)	x	.	x
⚡ Outlander (2015 >)	x	.	x
Shogun (2007 >)	x	.	x
Nissan							
Evalia (2012 -2014)	x
Juke (2010 >)	x	.	x
Micra (2011 >)	x	.	x

	①	②	③	④	⑤	⑥	⑦
Note (2006 - 2013)	x	.	x
Note (2014 >)	x	.	x
Qashqai+2 (2008 >)	x	.	x
Qashqai (2014 >)	x	.	x
Quest MPV (2012 >)	x	.	x
X-Trail (2007 >)	x	.	x
Opel							
Adam (2013 >)	x	.	x
Agila (2008 >)	x	.	x
Ampera (2011 >)	x	.	x
Antara (2007 >)	x	.	x
Astra 5dr (2010 >)	x	.	x
Astra Estate (2010 >)	x	.	x
Astra GTC (2011 >)	x	.	x
Corsa 3dr Hatchback (2006 >)	x	.	x
Corsa 5dr Hatchback (2006 >)	x	.	x
Corsa 5dr (2015 >)	x	.	x
Corsa VXR (2007 >)	x	.	x
Insignia Hatchback (2009 >)	x	.	x
Insignia Saloon (2009 >)	x	.	x
Insignia Sports Tourer (2009 >)	x	.	x
Meriva (2010 >)	x	.	x
Mokka (2013 >)	x	.	x
Vivaro (2014 >)	x	.	.	.	x	x	x
Zafira (2005 >)	x
Zafira VXR (2005 >)	x
Zafira Tourer (2014 >)	x
Peugeot							
107 (2005 >)	x	.	x
108 (2015 >)	x	.	x
207 3dr (2006 - 2012)	x	.	x
207 5dr (2006 - 2012)	x	.	x
207 SW (2007 - 2012)	x	.	x
2008 (2013 >)	x	.	x
208 3dr (2013 >)	x	.	x
208 5dr (2013 >)	x	.	x
307 (2001 - 2007)	x	.	x
307 Estate (2002 - 2007)	x	.	x
308 Hatchback (2007 >)	x
308 SW (2008 >)	x
308 (2014 >)	x
3008 (2009 >)	x
508 (2011 >)	x
508 SW (2011 >)	x
⚡ 508 RXH (2013 >)	x
5008 (2011 >)	x
RCZ (2011 >)	x

	①	②	③	④	⑤	⑥	⑦
Porsche							
⚡ Cayenne (2011 >)	X	•	X	•	-	-	-
⚡ Panamera (2011 >)	X	•	X	•	-	-	-
Cayenne (2015 >)	X	•	X	•	-	-	-
Panamera (2015 >)	X	•	X	•	-	-	-
Renault							
Captur (2015 >)	X	•	X	•	-	-	-
Clio (2005 - 2012)	X	•	X	•	-	-	-
Clio Renault Sport (2006 - 2012)	X	•	X	•	-	-	-
Clio Sport Tourer (2007 - 2012)	X	•	X	•	-	-	-
Clio (2013 >)	X	•	X	•	-	-	-
Laguna (2008 - 2012)	X	•	X	•	-	-	-
Laguna Sport Tourer (2008 - 2012)	X	•	X	•	-	-	-
Megane Hatchback (2008 >)	X	•	X	•	-	-	-
Megane Sport Tourer (2009 >)	X	•	X	•	-	-	-
Modus (2004 - 2012)	X	•	X	•	-	-	-
Grand Modus (2008 - 2012)	X	•	X	•	-	-	-
Scenic (2009 >)	X	•	•	•	•	•	•
Trafic (2001 - 2014)	X	•	•	•	•	•	•
Twingo (2007 >)	X	•	X	•	-	-	-
Twingo (2012 >)	X	•	X	•	-	-	-
Twingo (2015 >)	X	•	X	•	-	-	-
Saab							
9-3 (2002 - 2012)	X	•	X	•	-	-	-
9-3 Sport Wagon (2005 - 2012)	X	•	X	•	-	-	-
9-3 X (2009 - 2012)	X	•	X	•	-	-	-
9-5 Estate (2005 - 2010)	X	•	X	•	-	-	-
9-5 (2011 - 2012)	X	•	X	•	-	-	-
Seat							
Alhambra (2010 >)	X	•	•	•	•	•	•
Altea (2004 - 2011)	X	•	X	•	-	-	-
Altea XL (2007 - 2011)	X	•	X	•	-	-	-
Altea Freetrack4 (2007 - 2009)	X	•	X	•	-	-	-
Exeo (2008 >)	X	•	X	•	-	-	-
Exeo ST Estate (2008 >)	X	•	X	•	-	-	-
Ibiza Cupra (2009 >)	X	•	X	•	-	-	-
Ibiza FR (2009 >)	X	•	X	•	-	-	-
Ibiza Hatchback (2008 - 2013)	X	•	X	•	-	-	-
Leon Cupra (2007 - 2011)	X	•	X	•	-	-	-
Leon FR (2006 - 2012)	X	•	X	•	-	-	-
Leon Hatchback (2005 - 2012)	X	•	X	•	-	-	-
Leon (2013 >)	X	•	X	•	-	-	-
Mii (2011 >)	X	•	X	•	-	-	-
Toledo (2013 >)	X	•	X	•	-	-	-

	①	②	③	④	⑤	⑥	⑦
Skoda							
Citigo (2012 >)	X	•	X	•	-	-	-
Fabia Estate Combi (2008 >)	X	•	X	•	-	-	-
Fabia Hatchback (2007 >)	X	•	X	•	-	-	-
Octavia Estate Combi (2005 - 2013)	X	•	X	•	-	-	-
Octavia Hatchback (2004 - 2012)	X	•	X	•	-	-	-
Octavia Scout (2007 - 2013)	X	•	X	•	-	-	-
Octavia Hatchback (2013 >)	X	•	X	•	-	-	-
Rapid (2013 >)	X	•	X	•	-	-	-
Roomster (2006 >)	X	•	X	•	-	-	-
Superb Combi Estate (2008 >)	X	•	X	•	-	-	-
Superb (2008 >)	X	•	X	•	-	-	-
Yeti (2009 >)	X	•	X	•	-	-	-
Smart							
For Two Coupe (2007 >)	X	-	-	-	-	-	-
Suzuki							
Alto (2009 >)	X	•	X	•	-	-	-
Grand Vitara (2006 >)	X	•	X	•	-	-	-
Splash (2008 >)	X	•	X	•	-	-	-
Swift Sport (2011 >)	X	•	X	•	-	-	-
SX-4 (2006 >)	X	•	X	•	-	-	-
SX-4 Saloon (2009 >)	X	•	X	•	-	-	-
Subaru							
BRZ (2012 >)	X	•	X	•	-	-	-
Forester (2013 >)	X	•	X	•	-	-	-
Impreza 5 Door (2013 >)	X	•	X	•	-	-	-
Legacy (2012 >)	X	•	X	•	-	-	-
Outback (2012 >)	X	•	X	•	-	-	-
XV Hatchback (2011 >)	X	•	X	•	-	-	-
Toyota							
Auris (2007 - 2012)	X	•	X	•	-	-	-
Auris (2013 >)	X	•	X	•	-	-	-
Avensis Hatchback (2003 - 2011)	X	•	X	•	-	-	-
Avensis Tourer (2009 >)	X	•	X	•	-	-	-
Aygo (2005 >)	X	•	X	•	-	-	-
Aygo (2014 >)	X	•	X	•	-	-	-
EZ MPV (2013 >)	X	•	X	•	-	-	-
GT86 (2012 >)	X	•	X	•	-	-	-
Highlander (2013 >)	X	•	X	•	-	-	-
Land Cruiser (2003 - 2009)	X	•	X	•	-	-	-

	1	2	3	4	5	6	7
⚡ Land Cruiser (2009 >)	X	X
Prius (2004 - 2009)	X	X
Prius (2010 >)	X	X
Prius (2015 >)	X	X
Prius Plus + (2012 >)	X	X
Rav 4 MK3 (2006 - 2011)	X	X
RAV4 (2013 >)	X	X
Verso (2009 - 2012)	X	X
Verso (2013 >)	X	X
Yaris Hatchback (2011 >)	X	X

Vauxhall

Adam (2013 >)	X	.	X
Agila (2008 >)	X	.	X
Ampera (2011)	X	.	X
Antara (2007 >)	X	.	X
Astra 5dr (2010 >)	X	.	X
Astra Estate (2010 >)	X	.	X
Astra GTC (2011 >)	X	.	X
Corsa D (2007 >)	X	.	X
Corsa 3dr Hatchback (2006 >)	X	.	X
Corsa 5dr Hatchback (2006 >)	X	.	X
Corsa 5dr (2015 >)	X	.	X
Corsa VXR (2007 >)	X	.	X
Insignia Hatchback (2009 >)	X	.	X
Insignia Saloon (2009 >)	X	.	X
Insignia Sports Tourer (2009 >)	X	.	X
Meriva (2010 >)	X	.	X
Mokka (2013 >)	X	.	X
Vivaro (2014 >)	X	.	.	.	X	X	X
Zafira (2005 >)	X
Zafira VXR (2005 - 2010)	X
Zafira Tourer (2012 >)	X

Volkswagen

Beetle (2012 >)	X	.	X
Multivan Caravelle (2008)	X	.	X
Golf Cabriolet (2009 - 2012)	X	.	X
Golf Hatchback (2009 - 2012)	X	.	X
⚡ Golf Hatchback MK7 (2012 >)	X	.	X
Golf Plus (2009 - 2011)	X	.	X
Jetta (2011 >)	X	.	X
Passat (2010 >)	X	.	X
Passat (2005 - 2010)	X	.	X
Passat Saloon (2015 >)	X	.	X
Passat Alltrack (2012 >)	X	.	X
Passat CC (2008 >)	X	.	X

	1	2	3	4	5	6	7
Passat Estate (2005 - 2011)	X	.	X
Passat Estate (2015 >)	X	.	X
Polo 3dr (2009 >)	X	.	X
Polo 5dr (2009 >)	X	.	X
Scirocco (2011)	X	.	X
Sharan (2010 >)	X	.	X
Tiguan (2008 >)	X	.	X
Touareg (2012 >)	X	.	X
Touran (2010 >)	X	.	X
Transporter 5 (2003 >)	X
UP! (2012 >)	X	.	X

Volvo

C30 (2007 - 2013)	X	.	X
S60 (2010 >)	X	.	X
S80 (2007 >)	X	.	X
V40 (2013 >)	X	.	X
V40 Cross Country (2012 >)	X	.	X
V60 (2011 >)	X	.	X
⚡ V60 (2015 >)	X	.	X
V70 (2008 >)	X	.	X
XC60 (2008 >)	X	.	X
XC70 (2008 >)	X	.	X
XC90 (2003 - 2013)	X	.	X	.	.	.	X